

**RPT5510 Series**

**TEMPEST/COTS AC EMI Power Line Filter**

**RPT5510  
TEMPEST / COTS TO 25A  
PERFORMANCE TO 10GHZ  
70dB**

**Specifications**

**Operating Freq.:** 50/60 Hz

**Max Operating Voltage:** 250VAC

**Operating Temperature:** 70°C

**Hipot Rating:** 1500VDC (P/N - E)

**Leakage Current:** 3.5mA / Line (250V/60Hz)

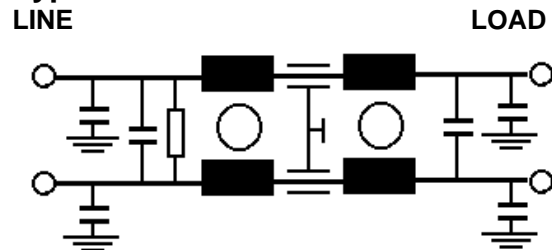
Note: Leakage current is directly related to the line-ground caps in the filter. If higher leakage current is allowed, the caps can be increased to improve the low frequency insertion loss.

**Terminations:** M5 Studs (-S)

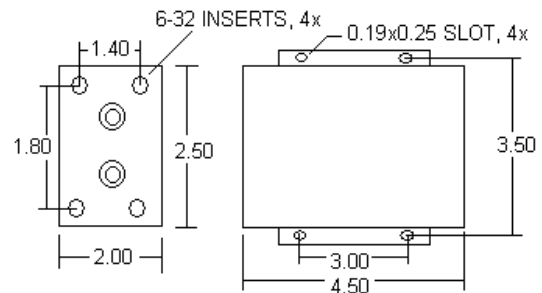
Call for other termination types (e.g. Circular Mil Connectors, etc).

**Applications:** TEMPEST / MIL-461 / DO-160

**Typical Schematic**



**Mechanicals**



**Part Number / Ordering**

RPT5510	-X (Amps)	-T
	5	S
	10	
	15	
	25	

**Typical CM Insertion Loss, 50ohm**

10KHz: 10dB  
100KHz: 40dB  
500KHz: 60dB  
1MHz - 10GHZ: 70dB