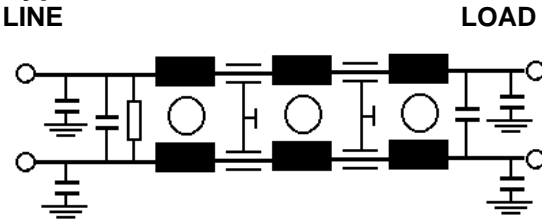


**RPT5500 Series**

**TEMPEST/COTS AC EMI Power Line Filter**

**RPT5500  
TEMPEST / COTS TO 25A  
PERFORMANCE TO 10GHZ  
100dB**

**Typical Schematic**



**Specifications**

**Operating Freq.:** 50/60 Hz

**Max Operating Voltage:** 250VAC

**Operating Temperature:** 70°C

**Hipot Rating:** 1500VDC (P/N - E)

**Leakage Current:** 3.5mA / Line (250V/60Hz)

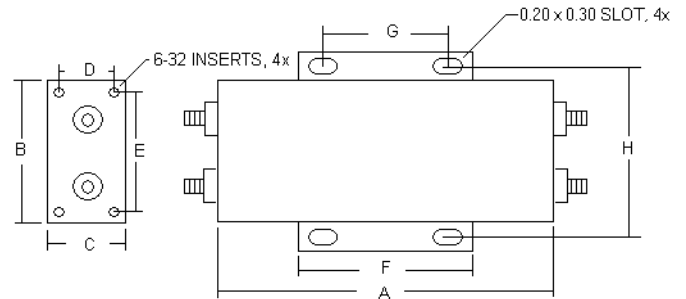
Note: Leakage current is directly related to the line-ground caps in the filter. If higher leakage current is allowed, the caps can be increased to improve the low frequency insertion loss.

**Terminations:** M5 Studs (-S)

Call for other termination types (e.g. Circular Mil Connectors, etc).

**Applications:** TEMPEST / MIL-461 / DO-160

**Mechanicals**



**Part Number / Ordering**

RPT5500	-X (Amps)	-T
	5	S
	10	
	15	
	25	

Amps	A	B	C	D	E	F	G	H
5, 10	8	3.5	2	1.30	2.8	6	5	4
15, 25	11	4	2	1.30	3.3	9	8	4.5

**Typical CM Insertion Loss, 50ohm**

10KHz: 20dB  
 100KHz: 60dB  
 500KHz: 80dB  
 1MHz - 10GHZ: 100dB

Dimensions shown for reference only.  
 Specifications subject to change.

**RADIUS POWER**  
 Standard & Custom Products

www.radiuspower.com  
 PH 714-289-0055  
 FAX 714-289-214