

RPT5000 Series

TEMPEST/COTS DC EMI Power Line Filter

**RPT5000
TEMPEST / COTS TO 25A
PERFORMANCE TO 10GHZ
100dB**

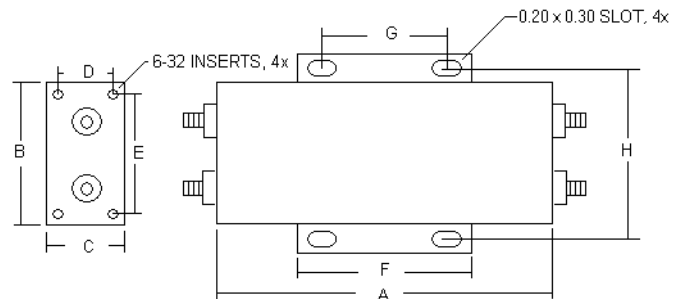
Specifications

Operating Freq.: DC
Max Operating Voltage: 400VDC
Operating Temperature: 70°C
Hipot Rating: 1500VDC (P/N - E)
Terminations: M5 Studs (-S)
 Call for other termination types (e.g. Circular Mil Connectors, etc).
Applications: TEMPEST / MIL-461 / DO-160

Part Number / Ordering

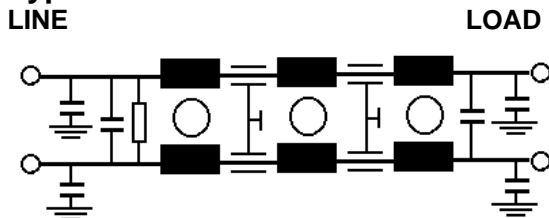
RPT5000	-X (Amps)	-T
	5	S
	10	
	15	
	25	

Mechanicals



Amps	A	B	C	D	E	F	G	H
5, 10	8	3.5	2	1.30	2.8	6	5	4
15, 25	11	4	2	1.30	3.3	9	8	4.5

Typical Schematic



Typical CM Insertion Loss, 50ohm

10KHZ – 10GHZ: 100dB

Dimensions shown for reference only.
 Specifications subject to change.

RADIUS POWER
 Standard & Custom Products

www.radiuspower.com
 PH 714-289-0055
 FAX 714-289-214