

**RPM9000 Series MIL/COTS AC, 1-PH, IEC INLET EMI Power Line Filter**

**RPM9000  
MILITARY / COTS TO 20A  
IEC 320 INLET STYLE  
MIL-STD-461 / DO-160**

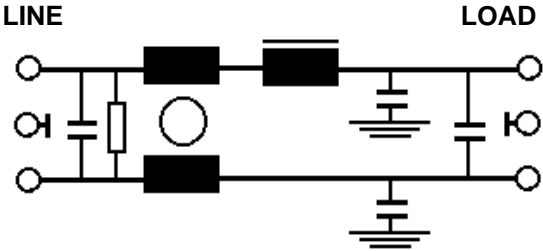
**Specifications**

**Operating Freq.:** 47-63HZ  
**Max Operating Voltage:** 250VAC  
**Operating Temperature:** 55°C  
**Hipot Rating:** 1500VDC (P/N - E)  
**Terminations:** 0.25x0.032 QDS  
**Applications:** MIL-461 / DO-160  
**Leakage Current:** 2mA (5-15A)  
                           4mA (20A)

**Part Number / Ordering**

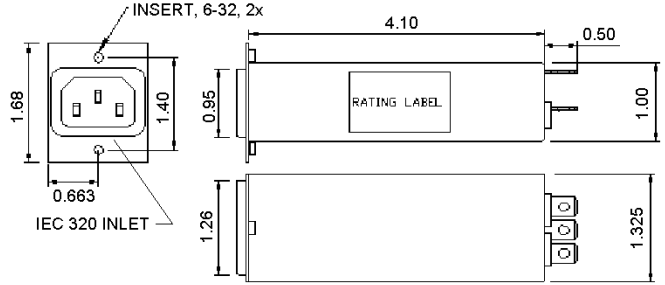
RPM9000	-X (Amps)	-T
	5	QD
	10	
	15	
	20	

**Schematic**

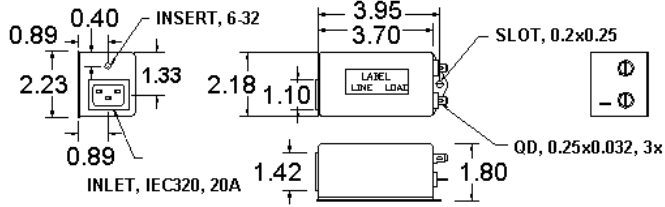


**Mechanicals**

**5,10,15A**



**20A**



**Typical Insertion Loss, 50ohm**

FREQ(MHz)	.01	.15	.5	1	10	50	100
CM, dB	16	38	50	60	50	45	35
DM, dB	28	45	60	60	60	---	---

Dimensions shown for reference only.  
Specifications subject to change.