

**RPM8500 Series**

**MIL/COTS 3-PH Delta EMI Power Line Filter**

**RPM8500  
MILITARY / COTS TO 50A  
47-400HZ  
MIL-STD-461 / DO-160**

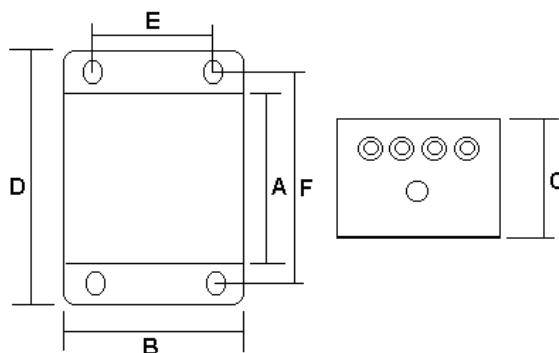
**Specifications**

**Operating Frequency:** 47-400Hz  
**Max Operating Voltage:** 480VAC  
**Operating Temperature:** -40 to 70°C  
**Hipot Rating:** 2500VDC (P/N - E)  
**Terminations:** M5 (-S)  
                   M6 Studs (-50 Amp)  
                   Call for other termination types (e.g. Circular  
                   Mil Connector, etc.)  
**Applications:** MIL-461 / DO-160

**Part Number/Ordering**

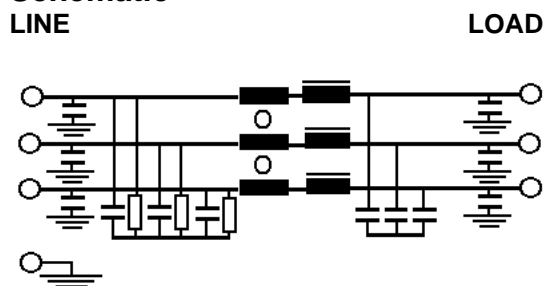
RPM8500	-X (Amps)	-T
	5	S
	10	
	20	
	30	
	50	

**Mechanical**



I	A	B	C	D	E	F	MTG
5, 10	4.25	4.25	2.25	5.75	3.5	5	0.2x0.4
20	5	4	2.75	6.7	3.25	5.8	0.2x0.4
30	8	3.5	2.75	10	2.5	9	0.2x0.3
50	10	4	3.25	11	3	11	0.2x0.3

**Schematic**



**Typical Insertion Loss, 50ohm**

FREQ(MHz)	.01	.15	.5	1	10	30
CM, dB	16	30	48	52	48	35
DM, dB	22	40	55	55	45	30

Dimensions shown for reference only.  
 Specifications subject to change.

**RADIUS POWER**  
 Standard & Custom Products

www.radiuspower.com  
 PH 714-289-0055  
 FAX 714-289-214