

RPM7200 Series MIL/COTS AC, 1-PH EMI Power Line Filter

**RPM7200
MILITARY / COTS TO 50A
PERFORMANCE TO 10GHZ
MIL-STD-461 / DO-160**

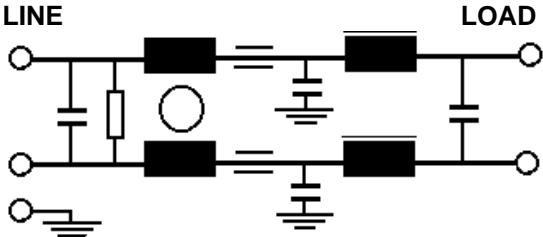
Specifications

Operating Freq.: 47-400HZ
Max Operating Voltage: 250V +10%
Operating Temperature: 70°C
Hipot Rating: 1500VDC (P/N - E)
Terminations: M5 Studs (-S)
 Call for other termination types (e.g. Circular Mil Connectors, etc.)
Typical Leakage Current: 3.5mA/line (250V/60Hz)
 note: leakage current is determined by the line to ground capacitors in the filter. The capacitors can be easily varied to match the system leakage requirements.
Applications: MIL-461 / DO-160

Part Number / Ordering

RPM7200	-X (Amps)	-T
	5	S
	10	
	25	
	50	

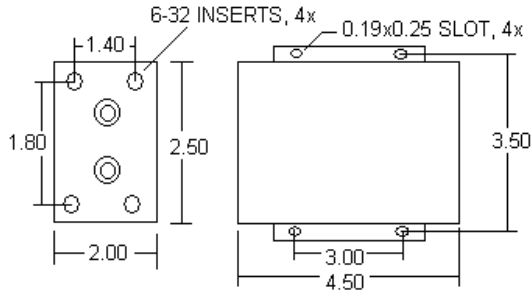
Schematic



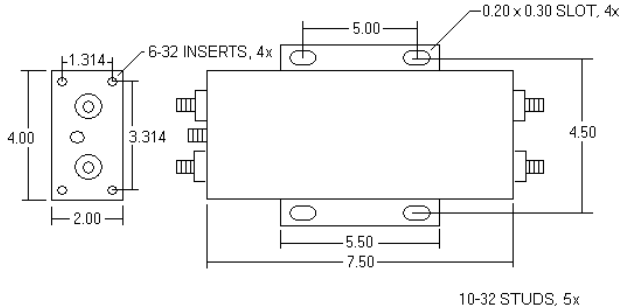
Dimensions shown for reference only.
 Specifications subject to change.

Mechanicals

5/10A



25/50A



NOTE: ALL DIMENSIONS IN INCHES
 FOR 50A, LENGTH IS 9.5"

Typical Insertion Loss, 50ohm

FREQ(MHz)	.01	.15	.5	1	10	1000	10000
CM, dB	20	38	50	60	70	70	70
DM, dB	28	45	60	60	60	---	---