

RPM7050 Series MIL/COTS AC, 1-PH, 1U Height EMI Power Line Filter

**RPM7050
MILITARY / COTS TO 30A
MIL-STD-461 / DO-160
1U HEIGHT**

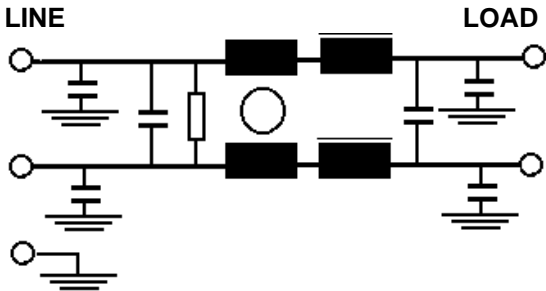
Specifications

Operating Freq.: 47-400HZ
Max Operating Voltage: 250VAC
Operating Temperature: 70°C
Hipot Rating: 2000VDC (P/N - E)
Terminations: M5 Studs (-S)
 Call for other termination types (e.g. Circular Mil Connectors, etc.)
Typical Leakage Current: 3.5mA/line (250V/60Hz)
 note: leakage current is determined by the line to ground capacitors in the filter. The capacitors can be easily varied to match the system leakage requirements.
Applications: MIL-461 / DO-160

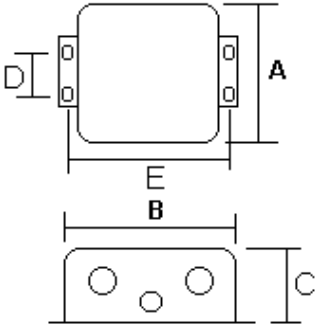
Part Number / Ordering

RPM7050	-X (Amps)	-T
	5	S
	10	
	20	
	30	

Schematic



Mechanicals



A	B	C	D	E	MTG
3.95	3.35	1.48	2.00	3.75	0.2

Typical Insertion Loss, 50ohm

FREQ(MHz)	.01	.15	.5	1	10	30
CM, dB	16	32	50	50	45	30
DM, dB	22	42	60	60	40	30

Dimensions shown for reference only.
 Specifications subject to change.