

**RPM7020 Series MIL/COTS Compact, AC, 1-PH EMI Power Line Filter**

**RPM7020  
MILITARY / COTS TO 20A  
47-400HZ  
MIL-STD-461 / DO-160**

**Specifications**

**Operating Freq.:** 47-400HZ

**Max Operating Voltage:** 250VAC

**Operating Temperature:** 70°C

**Hipot Rating:** 2000VDC (P/N - E)

**Terminations:** M5 Studs (-S)

Call for other termination types (e.g. Circular Mil Connectors, etc.)

**Typical Leakage Current:** 3.5mA/line (250V/60Hz)

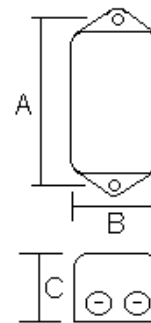
note: leakage current is determined by the line to ground capacitors in the filter. The capacitors can be easily varied to match the system leakage requirements.

**Applications:** MIL-461 / DO-160

**Part Number / Ordering**

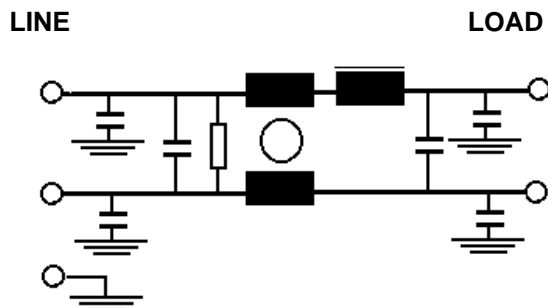
RPM7020	-X (Amps)	-T
	5	S
	10	
	15	
	20	

**Mechanicals**



A	B	C	MTG
2.95	2	1.57	0.2

**Schematic**



**Typical Insertion Loss, 50ohm**

FREQ(MHz)	.01	.15	.5	1	10	30
CM, dB	14	30	50	50	45	30
DM, dB	22	40	60	60	40	30

Dimensions shown for reference only.  
Specifications subject to change.

**RADIUS POWER**  
Standard & Custom Products

www.radiuspower.com  
PH 714-289-0055  
FAX 714-289-214