

**RPM7000 Series**

**MIL/COTS AC, 1-PH EMI Power Line Filter**

**RPM7000  
MILITARY / COTS TO 50A  
47-400HZ  
MIL-STD-461 / DO-160**

**Specifications**

**Operating Freq.:** 47-400HZ

**Max Operating Voltage:** 250VAC

**Operating Temperature:** 70°C

**Hipot Rating:** 2000VDC (P/N - E)

**Terminations:** M5 Studs (-S)  
M6 Studs (-50 Amp)

Call for other termination types (e.g. Circular Mil Connectors, etc.)

**Typical Leakage Current:** 3.5mA/line (250V/60Hz)

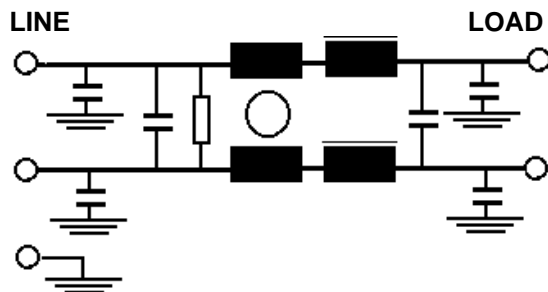
note: leakage current is determined by the line to ground capacitors in the filter. The capacitors can be easily varied to match the system leakage requirements.

**Applications:** MIL-461 / DO-160

**Part Number / Ordering**

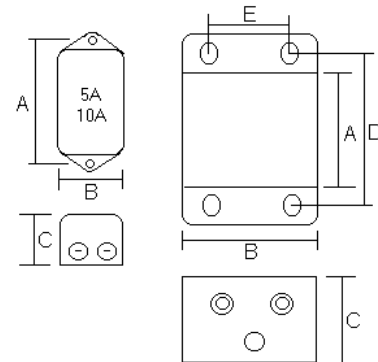
RPM7000	-X (Amps)	-T
	5	S
	10	
	20	
	30	
	50	

**Schematic**



Dimensions shown for reference only.  
Specifications subject to change.

**Mechanicals**



AMPS	A	B	C	D	E	MTG
5, 10	4.05	2.2	1.78	---	---	0.2
20, 30	4.25	3	2.5	4.87	2.5	0.25
50	6.75	4.25	2.75	7.68	2	0.25

**Typical Insertion Loss, 50ohm**

FREQ(MHz)	.01	.15	.5	1	10	30
CM, dB	16	32	50	50	45	30
DM, dB	22	42	60	60	40	30