

RPM6600 Series **MIL/COTS DC EMI Power Line Filter**

RPM6600
MILITARY / COTS TO 50A
PERFORMANCE TO 10GHZ
MIL-STD-461 / DO-160

Specifications

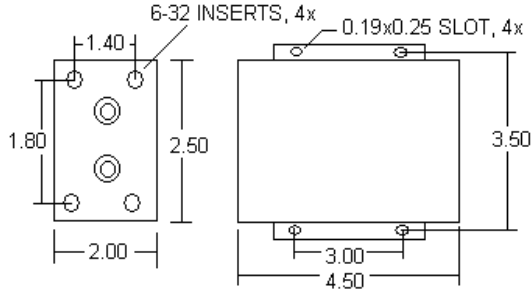
Operating Freq.: DC
Max Operating Voltage: 400VDC
Operating Temperature: 70°C
Hipot Rating: 1500VDC (P/N - E)
Terminations: M5 Studs (-S)
 Call for other termination types (e.g. Circular Mil Connectors, etc).
Applications: MIL461 / DO-160
 (ungrounded returns)

Part Number / Ordering

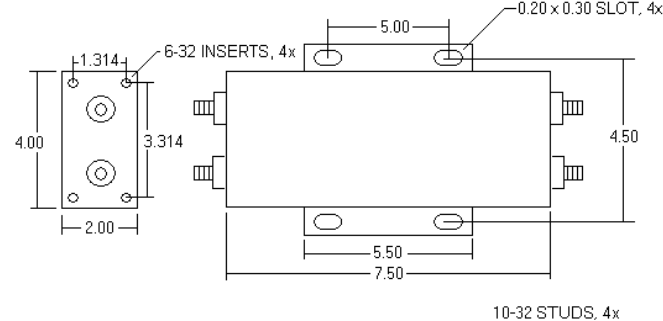
RPM6600	-X (Amps)	-T
	5	S
	10	
	25	
	50	

Mechanicals

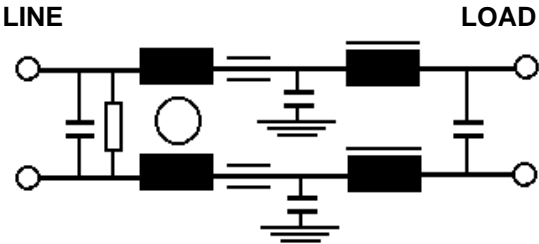
5/10A



25A/50A



Schematic



NOTE: ALL DIMENSIONS IN INCHES
 FOR 50A, LENGTH IS 9.5"

Typical Insertion Loss, 50ohm

FREQ(MHz)	.01	.15	.5	1	10	1000	10000
CM, dB	40	50	60	60	70	70	70
DM, dB	28	45	60	60	60	---	---

Dimensions shown for reference only.
 Specifications subject to change.