

**RPM6400 Series** **MIL/COTS DC EMI Power Line Filter**

**RPM6400**  
**MILITARY / COTS TO 50A**  
**PERFORMANCE TO 10GHZ**  
**MIL-STD-461 / DO-160**

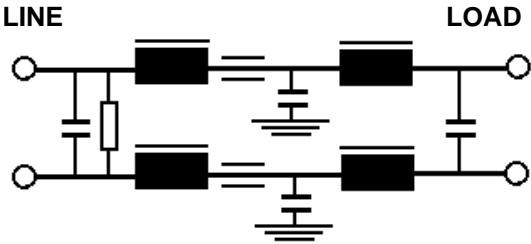
**Specifications**

**Operating Freq.:** DC  
**Max Operating Voltage:** 400VDC  
**Operating Temperature:** 70°C  
**Hipot Rating:** 1500VDC (P/N - E)  
**Terminations:** M5 Studs (-S)  
 Call for other termination types (e.g. Circular Mil Connectors, etc).  
**Applications:** MIL-461 / DO-160  
 (Grounded and ungrounded returns)

**Part Number / Ordering**

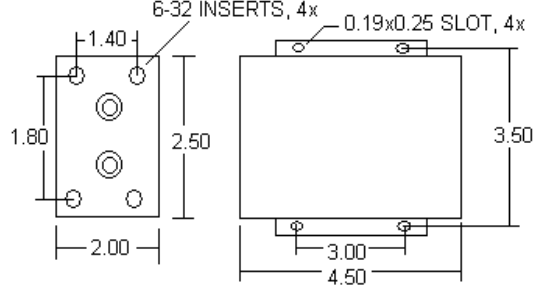
RPM6400	-X (Amps)	-T
	5	S
	10	
	25	
	50	

**Schematic**

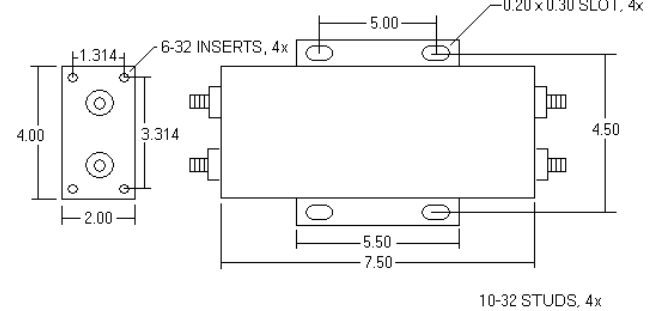


**Mechanicals**

5/10A



25/50A



NOTE: ALL DIMENSIONS IN INCHES  
 FOR 50A, LENGTH IS 9.5"

**Typical Insertion Loss, 50ohm**

FREQ(MHz)	.01	.15	.5	1	10	1000	10000
CM, dB	30	50	60	60	70	70	70
DM, dB	34	45	65	65	60	---	---

Dimensions shown for reference only.  
 Specifications subject to change.