

**RPM6200 Series** **MIL/COTS DC EMI Power Line Filter**

**RPM6200**  
**MILITARY / COTS TO 60A**  
**NON-GROUNDED RETURNS**  
**MIL-STD-461 / DO-160**

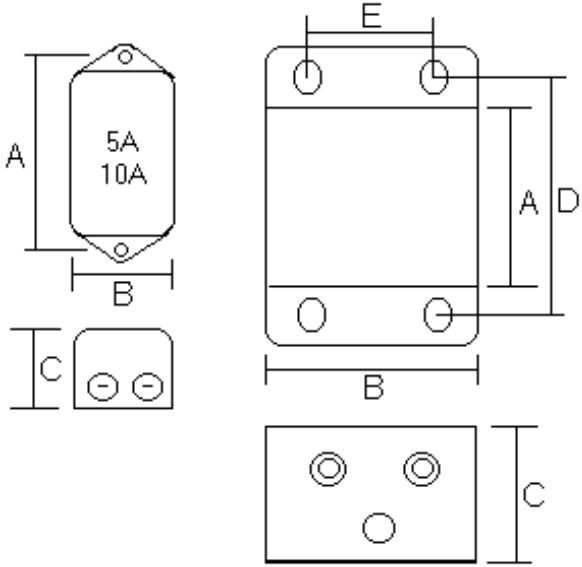
**Specifications**

**Operating Freq.:** DC  
**Max Operating Voltage:** 400VDC  
**Operating Temperature:** 70°C  
**Hipot Rating:** 2000VDC (P/N - E)  
**Terminations:** M5 Studs (-S)  
                   M6 Studs (-50/-60 Amps)  
 Call for other termination types (e.g. Circular Mil Connectors, etc).  
**Applications:** MIL-461 / DO-160  
 (2 Line systems with a non-grounded return)

**Part Number / Ordering**

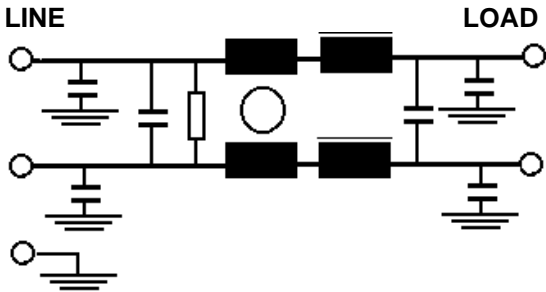
RPM6200	-X (Amps)	-T
	5	S
	10	
	20	
	30	
	50	
	60	

**Mechanicals**



AMPS	A	B	C	D	E	MTG
5, 10	4.05	2.2	1.78	---	---	0.2
20, 30	4.25	3	2.5	4.87	2.5	0.25
50	6.75	4.25	2.75	7.68	2	0.25
60	10	4	3.25	11	3	0.25x0.3

**Schematic**



**Typical Insertion Loss, 50ohm**

FREQ(MHz)	.01	.15	.5	1	10	30
CM, dB	22	45	60	60	55	50
DM, dB	22	42	60	60	40	30

Dimensions shown for reference only.  
 Specifications subject to change.