

RPM6000 Series **MIL/COTS DC EMI Power Line Filter**

RPM6000
MILITARY / COTS TO 60A
NON-GRND & GRND RTNS
MIL-STD-461 / DO-160

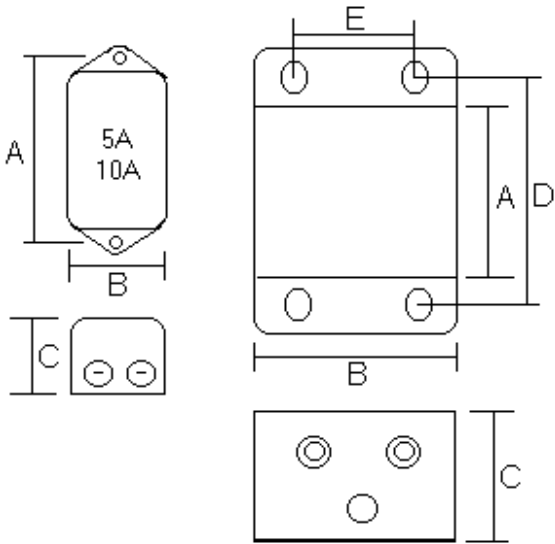
Specifications

Operating Freq.: DC
Max Operating Voltage: 400VDC
Operating Temperature: 70°C
Hipot Rating: 2000VDC (P/N - E)
Terminations: M5 Studs (-S)
 M6 Studs (-50/-60 Amps)
 Call for other termination types (e.g. Circular Mil Connectors, etc).
Applications: MIL-461 / DO-160
 (2 Line systems with non-grounded and grounded returns)

Part Number / Ordering

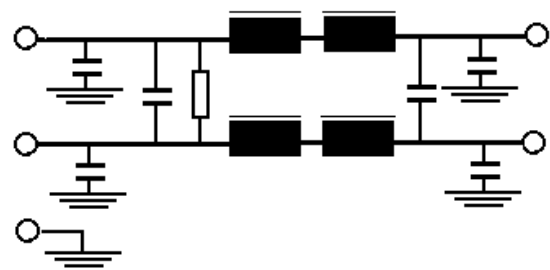
RPM6000	-X (Amps)	-T
	5	S
	10	
	20	
	30	
	50	
	60	

Mechanicals



AMPS	A	B	C	D	E	MTG
5, 10	4.05	2.2	1.78	---	---	0.2
20, 30	4.25	3	2.5	4.87	2.5	0.25
50	6.75	4.25	2.75	7.68	2	0.25
60	10	4	3.25	11	3	0.25x0.3

Schematic



Typical Insertion Loss, 50ohm

FREQ(MHz)	.01	.15	.5	1	10	30
CM, dB	22	38	45	50	40	35
DM, dB	28	48	52	50	45	30

Dimensions shown for reference only.
 Specifications subject to change.