

RPC1158-50

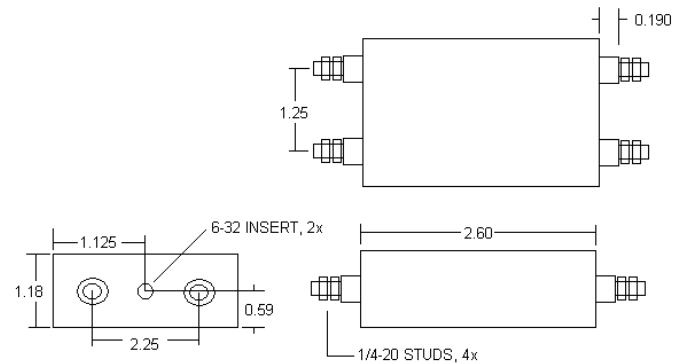
Compact DC Power Line Filter

ROHS COMPLIANT

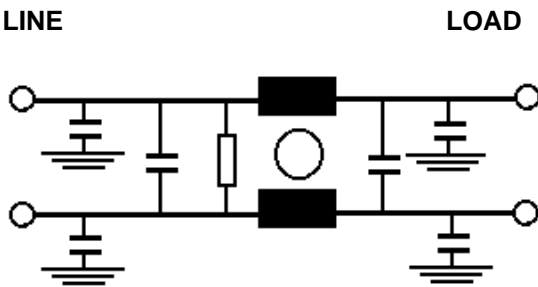
SPECIFICATIONS

Operating Freq.: DC
Max Operating Voltage: 250V
Ambient Temperature: 50°C
Inrush Rating: 20x (10ms), 1.5x (1.5min)
Climatic Category : 25/100/21
Hipot Rating: 2500VDC (P/N - E)
Terminations: 1/4-20 Stud
Safety Approvals: UR/CSA/EN133200
Applications: Telecom, DC-DC Converters

MECHANICAL



SCHEMATIC



Call factory for other mounting options.

INSERTION LOSS, 50/50 OHM

FREQ(MHz)	.15	.5	1	10	30
CM, dB	14	28	45	55	45
DM, dB	22	34	50	50	40

Dimensions shown for reference only.
 Specifications subject to change.

RADIUS POWER
 Standard & Custom Products

www.radiuspower.com
 PH 714-289-0055
 FAX 714-289-214