

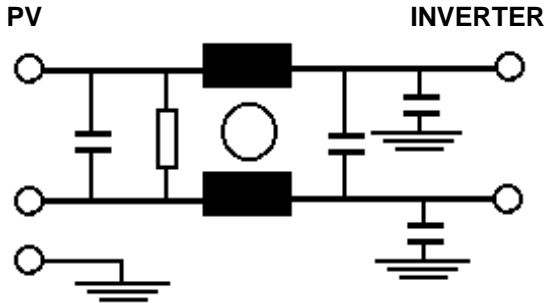
RP692 Series

High Voltage / High Current DC Power Line Filter

**RP692
DC TO 1500A & 1200V
CHASSIS MOUNT FILTER
INVERTER APPLICATIONS**

ROHS COMPLIANT

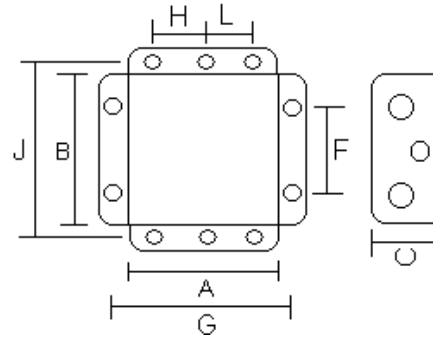
**Schematic
PV**



Specifications

- Operating Freq.: DC
- Max Operating Voltage: 1200VDC
- Ambient Temperature: 55°C
- Overload: 4x at Turn-on
- Climatic Category : 40/100/21
- Hipot Rating: 3600VDC (P/N - E)
- Terminals (-T): (-S) M5 (25/50A), M6 (75/100A)
M10 (100/150)
- (-B) Busbar
- Applications: PV Inverters
As well as other DC applications

Mechanicals



Part Number / Ordering

RP692	-X (Amps)	-T
	25	S
	50	S
	75	S
	100	S
	150	S
	250	B
	400	B
	600	B
	800	B
	1000	B
	1500	B

	A	B	C	F	G	MTG	
25	5.5	3.15	2.55	2.36	6.0	.25x.36	
50,75	6.7	3.75	3.15	2.95	7.2	.25x.36	
100	7.5	4.9	3.75	4	8	.25x.36	
150	8.6	5.5	4.5	4.75	9.15	.25x.36	
	A	B	C	H	L	J	
250	11.8	5.1	4.33	5.12	4.33	6.1	0.5
400,600	11.8	5.5	4.33	5.12	4.33	6.5	0.5
800,1000	11.8	5.9	5.5	5.12	4.33	6.9	0.5
1500	11.8	5.9	5.9	5.12	4.33	6.9	0.5

Note: from 250A – 1500A mounting is on filter sides

Typical Insertion Loss, dB, 50/50 ohm

FREQ(MHz)	.15	.5	1	10	30
CM, dB	65	75	55	45	40
DM, dB	65	70	50	35	30

Dimensions shown for reference only.
Specifications subject to change.

RADIUS POWER
Standard & Custom Products

www.radiuspower.com
PH 714-289-0055
FAX 714-289-214