

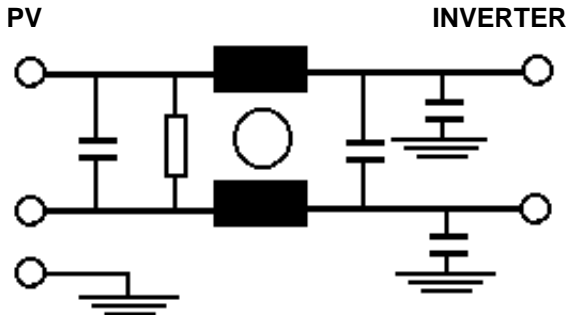
**RP690 Series**

**High Voltage / High Current DC Power Line Filter**

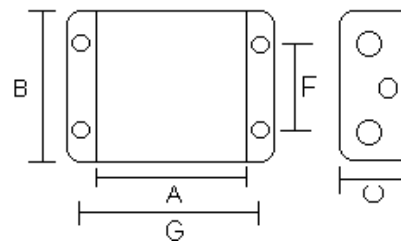
**RP690  
DC TO 500A & 1200V  
CHASSIS MOUNT FILTER  
INVERTER APPLICATIONS**

ROHS COMPLIANT

**Schematic  
PV**



**Mechanicals**



**Specifications**

- Operating Freq.: DC
- Max Operating Voltage: 1200VDC
- Ambient Temperature: 55°C
- Inrush Rating: 4x at Turn-on
- Climatic Category : 40/100/21
- Hipot Rating: 3600VDC (P/N - E)
- Terminals: (-S) M6 (50A), M10 (100-300A)  
Dual M12 (500A)
- Applications: PV Inverters  
General DC applications

**Part Number / Ordering**

RP690	-X (Amps)	-Y (Ycap, nF)	-T
	50	100	S
	100	470	
	150	1000	
	200	2200	
	300		
	500		

Note: Use any -Y (Ycap) with any -X (Amps) rating  
e.g. RP690-100-2200-S  
100 Amps with 2200nF y-caps

	A	B	C	F	G	MTG
50	10	4	3.25	3	11	.25 x .3
100	10	6.6	4.5	5.12	11	.3x.6
150	10	6.6	4.5	5.12	11	.3x.6
200,300	13	6.6	4.5	5.12	14.7	.3x.6
500	15	9.6	4.5	8	16	.3x.6

**Typical Insertion Loss, dB, 50/50 ohm**

FREQ(MHz)	.15	.5	1	10	30
CM, dB	50	65	60	45	50
DM, dB	55	60	60	50	50

Dimensions shown for reference only.  
Specifications subject to change.

**RADIUS POWER**  
Standard & Custom Products

www.radiuspower.com  
PH 714-289-0055  
FAX 714-289-214