

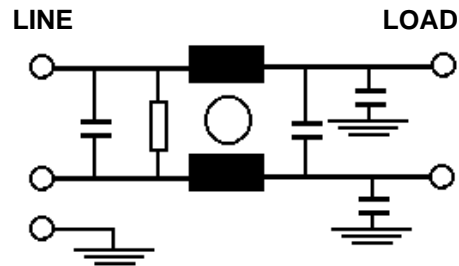
RP680 Series

Compact DC High Current EMI Filter

**RP680
BUSBARS TO 600V
250A – 1000A
INVERTER APPLICATIONS**

ROHS COMPLIANT

Schematic



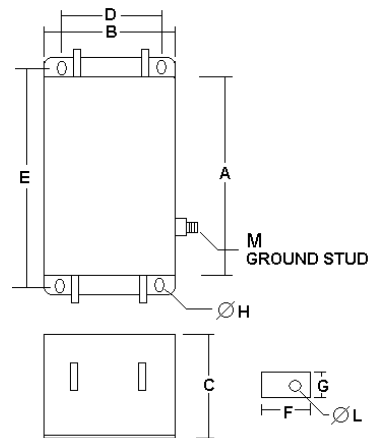
Specifications

Operating Frequency: DC
Operating Voltage: 600VDC
Ambient Temperature: 50°C
Inrush Rating: 20x (10ms), 1.5x (1min)
Climatic Category: 25/100/21
Hipot Rating: 3500VDC (P/N - E)
Terminations: Cu BusBars
Applications: Inverters / Machinery / Industrial
 Grid-tied Inverters, Solar Inverters

Typical Insertion Loss. 50/50 ohm

FREQ(MHz)	.15	.5	1	10	30
CM, dB	66	66	66	40	24
DM, dB	40	60	45	30	28

Mechanicals



Mounting Holes: 11mm, 4x

Part Number / Ordering

RP680	-X (Amps)	-Y (Ycap, nF)
	250	10
	400	22
	600	100
	800	470
	1000	1000
		2200
		4400

Note: Use any -Y (Ycap) with any -X (Amps) rating
 e.g. RP680-600-100-S (600A & 100nF y-cap)

I	A	B	C	D	E	F	G	L	M
250	240	200	86	165	275	37	20	9	10
400	240	200	86	165	275	37	25	11	10
600	240	200	86	165	275	37	25	11	10
800	310	190	125	155	345	47	40	13.5	12
1000	310	190	125	155	345	47	40	13.5	12

Dimensions shown for reference only.
 Specifications subject to change.

RADIUS POWER
 Standard & Custom Products

www.radiuspower.com
 PH 714-289-0055
 FAX 714-289-214