

RP670 Series

High Current DC Power Line Filter

**RP670
DC TO 200A
CHASSIS MOUNT FILTER
INVERTER APPLICATIONS**

ROHS COMPLIANT

Specifications

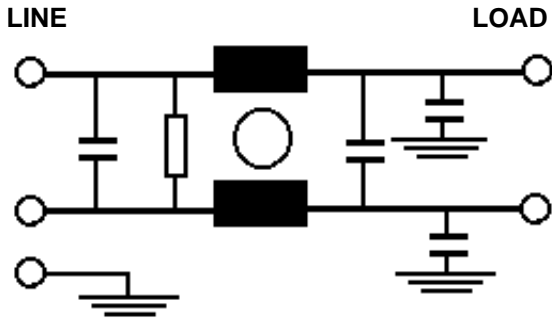
Operating Freq.: DC
 Max Operating Voltage: 600VDC
 Ambient Temperature: 50°C
 Inrush Rating: 20x (10ms), 1.5x (1min)
 Climatic Category : 25/100/21
 Hipot Rating: 3500VDC (P/N - E)
 Terminals: M6 (100A), M10 (150-200A)
 Applications: Transformerless Inverters,
 Solar panel/inverter de-coupling

Part Number / Ordering

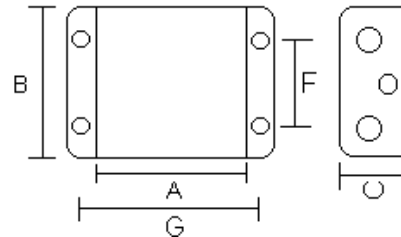
RP670	-X (Amps)	-Y (Ycap, nF)	-T
	100	1	S
	150	4.7	
	180	10	
	200	22	
		100	
		470	

Note: Use any -Y (Ycap) with any -X (Amps) rating
 e.g. RP670-100-22-S
 100 Amps with 22nF y-caps

Schematic



Mechanicals



A	B	C	F	G	MTG
10	4	3.25	3	11	.25 x .3

Typical Insertion Loss, dB, 50/50 ohm

FREQ(MHz)	.15	.5	1	10	30
CM, dB	16	28	36	45	50
DM, dB	32	60	60	50	50

Dimensions shown for reference only.
 Specifications subject to change.

RADIUS POWER
 Standard & Custom Products

www.radiuspower.com
 PH 714-289-0055
 FAX 714-289-214