

RP605 Series

High Current DC Power Line Filter

**RP605
DC TO 200A
CHASSIS MOUNT FILTER**

ROHS COMPLIANT

Specifications

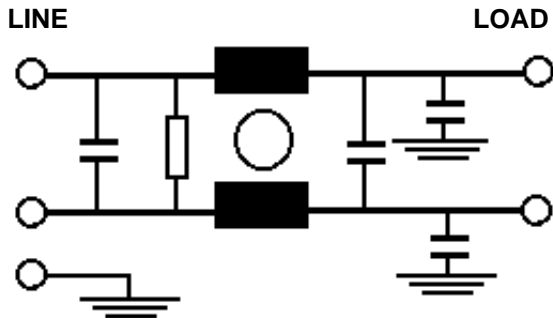
Operating Freq.: DC
 Max Operating Voltage: 250VDC
 Ambient Temperature: 40°C
 Inrush Rating: 20x (10ms), 1.5x (1.5min)
 Climatic Category : 25/100/21
 Hipot Rating: 2500VDC (P/N - E)
 Terminals: M6 (100A), M10 (150-200A)
 Safety Approval: UL/CSA

Part Number / Ordering

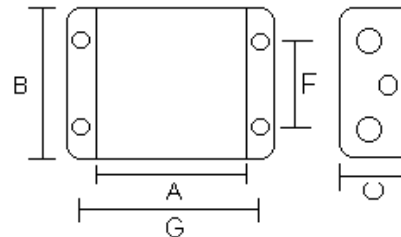
RP605	-X (Amps)	-Y (Ycap, nF)	-T
	100	100	S
	150		
	180		
	200		

Note: -Y used with any -X amperage filter.
 Alternate Y-caps available upon request.

Schematic



Mechanicals



A	B	C	F	G	MTG
6.75	4.25	2.75	2	7.38	.18 x .3

Typical Insertion Loss, dB, 50/50 ohm

FREQ(MHz)	.15	.5	1	10	30
CM, dB	16	28	36	45	50
DM, dB	32	60	60	50	50

Dimensions shown for reference only.
 Specifications subject to change.

RADIUS POWER
 Standard & Custom Products

www.radiuspower.com
 PH 714-289-0055
 FAX 714-289-214