

RP500 Series

EMI/Harmonics Dual Stage Power Line Filter

**RP500
EMI/HARMONICS TO 10A
CHASSIS MOUNT FILTER**

ROHS COMPLIANT



Specifications

Operating Freq.: DC - 60Hz
Operating Voltage: 250V +10%
Ambient Temperature: 40°C
Inrush Rating: 20x (10ms), 1.5x (1min)
Climatic Category : 25/100/21
Hipot Rating: 2500VDC (P/N - E)
Terminals: .250 QD Tabs
Safety Approvals: EN133200

Leakage Current

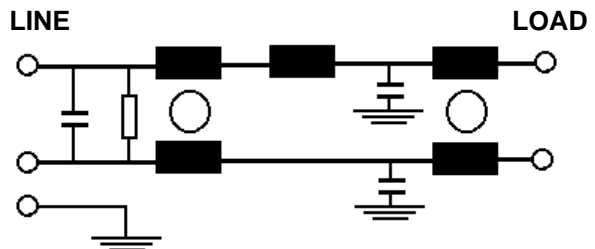
Ycap, nF	mA, 120V/60HZ	mA, 250V/50HZ
0	0	0
.22	.02	.035
.47	.042	.074
1	.09	.15
2.2	.2	.35
3.3	.3	.52
4.7	.42	.74
10	.9	1.5
22	2	3.5

Part Number / Ordering

RP500	-X (Amps)	-Y (Ycap, nF)
	3	0
	6	.22
	10	.47
		1
		2.2
		3.3
		4.7
		10
		15
		22

Note: Use any -Y (Ycap) with any -X (Amps) rating
 e.g. RP500-10-10
 10 Amps with 10nF y-caps

Schematic



Dimensions shown for reference only.
 Specifications subject to change.

RADIUS POWER
 Standard & Custom Products

www.radiuspower.com
 PH 714-289-0055
 FAX 714-289-214

RP500 Typical Insertion Loss, 50/50ohm

Mechanicals

3 AMP

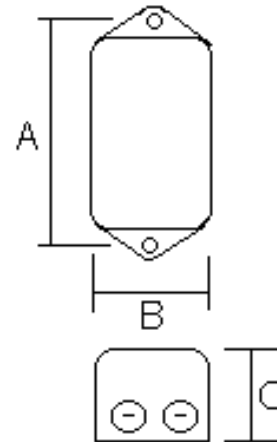
FREQ(MHz)		.15	.5	1	10	30
CM, dB		44	55	55	45	40
DM, dB		45	65	60	60	52

6 AMP

FREQ(MHz)		.15	.5	1	10	30
CM, dB		38	52	55	45	40
DM, dB		45	65	60	60	52

10 AMP

FREQ(MHz)		.15	.5	1	10	30
CM, dB		38	52	55	45	40
DM, dB		45	65	60	60	52



	A	B	C	MTG HOLE
3,6	4.06	2.2	1.8	.2
10	5.63	2.2	2.1	.2

Dimensions shown for reference only.
Specifications subject to change.

RADIUS POWER
Standard & Custom Products

www.radiuspower.com
PH 714-289-0055
FAX 714-289-214