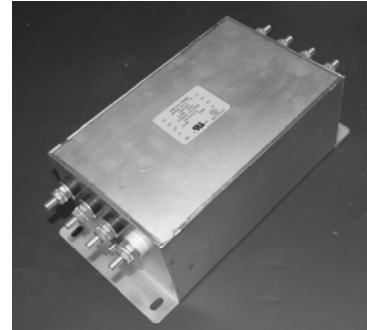


RP425 Series

3-Phase Wye Dual Stage Power Line Filter

**RP425
3PH WYE TO 300A**

ROHS COMPLIANT



Specifications

Operating Frequency: DC - 60Hz
Operating Voltage: 480V +10%
Ambient Temperature: 50°C
Inrush Rating: 20x (10ms), 1.5x (1min)
Climatic Category: 25/100/21
Hipot Rating: 3500VDC (P/N - E)
Terminations: 15/30/50A (M5), 80/100A (M6),
 150/200A (M10), 300A (M12)
Safety Approval: UR/CSA/EN133200

Leakage Current

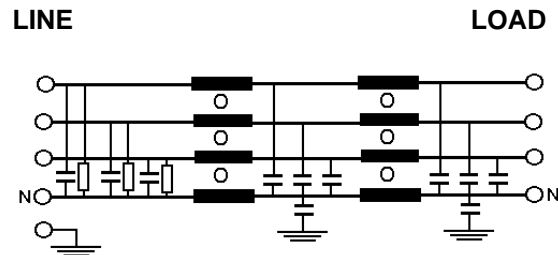
Ycap, nF	mA, 400V/50HZ
0	0
.22	.004
.47	.009
1	.018
2.2	.04
3.3	.06
4.7	.09
10	.18
22	.4
100	1.8
1000	18
2200	30

Part Number/Ordering

RP425	-X (Amps)	-Y (Y-cap, nF)	-T
	15	0	S
	30	.22	
	50	.47	
	80	1	
	100	2.2	
	150	4.7	
	200	10	
	300	22	
		100	
		1000	
		2200	

Note: Use any -Y (Y-cap) with any -X (Amps) rating
 e.g. RP425-300-2200-S
 300 Amps with 2200nF y-caps

Schematic



ROHS COMPLIANT

Dimensions shown for reference only.
 Specifications subject to change.

RADIUS POWER
 Standard & Custom Products

www.radiuspower.com
 PH 714-289-0055
 FAX 714-289-214

RP425 Typical Insertion Loss, 50/50ohm
Mechanicals
15 / 30 AMP

FREQ(MHz)	.15	.5	1	10	30
CM, dB	65	75	75	58	40
DM, dB	65	75	75	75	70

50 AMP

FREQ(MHz)	.15	.5	1	10	30
CM, dB	58	70	70	58	40
DM, dB	60	70	75	70	60

80 AMP

FREQ(MHz)	.15	.5	1	10	30
CM, dB	54	65	65	55	40
DM, dB	55	60	60	50	38

100 AMP

FREQ(MHz)	.15	.5	1	10	30
CM, dB	70	75	75	58	30
DM, dB	55	70	70	60	30

150 AMP

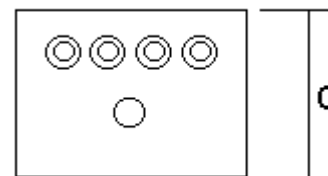
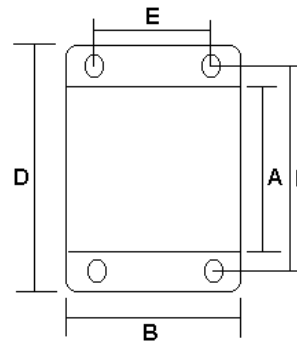
FREQ(MHz)	.15	.5	1	10	30
CM, dB	65	70	70	55	30
DM, dB	50	65	70	60	30

200 AMP

FREQ(MHz)	.15	.5	1	10	30
CM, dB	60	65	60	50	35
DM, dB	55	60	65	60	30

300 AMP

FREQ(MHz)	.15	.5	1	10	30
CM, dB	60	65	60	48	40
DM, dB	55	55	55	50	30



I	A	B	C	D	E	F	MTG
15/30/50	8	3.5	2.75	10	2.5	9	.25x.3
80	10	4	3.25	12	3	11	.25x.5
100/150 200	13	6.6	4.5	15.75	5.12	14.7	.3x.6
300	18	7	5	20	6	19	.3x.6

Dimensions shown for reference only.
Specifications subject to change.

RADIUS POWER
Standard & Custom Products

www.radiuspower.com
PH 714-289-0055
FAX 714-289-214