

RP410 Series Ultra Compact 3-Phase Wye 1-Stage Power Line Filter

**RP410
COMPACT 3PH WYE TO 20A
CHASSIS MOUNT FILTER**

ROHS COMPLIANT



Specifications

Operating Frequency: DC - 60Hz
Operating Voltage: 480V +10%
Ambient Temperature: 40°C
Inrush Rating: 20x (10ms), 1.5x (1min)
Climatic Category: 25/100/21
Hipot Rating: 3000VDC (P/N - E)
Terminals (-T): .250 QD Tabs
Safety Approvals: UR/cUR/EN133200

Leakage Current

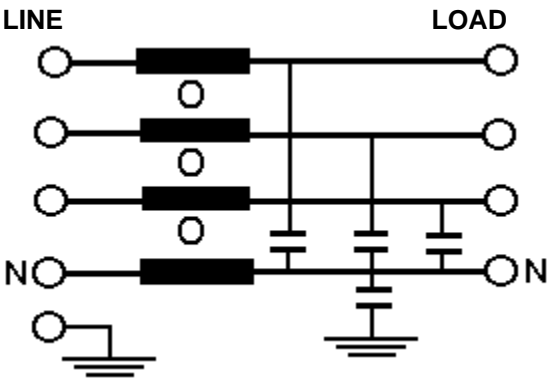
Ycap, nF	mA, 400V/50HZ
0	0
1	.018
4.7	.09
10	.18
22	.4
100	1.8

Part Number/Ordering

RP410	-X (Amps)	-Y (Ycap, nF)	-T
	6	0	QD
	10	1	
	20	4.7	
		10	
		22	
		100	

Note: Use any -Y (Ycap) with any -X (Amps) rating
 e.g. RP410-20-22
 20 Amps with 22nF y-caps

Schematic



Dimensions shown for reference only.
 Specifications subject to change.

RP410 Typical Insertion Loss, 50/50ohm

Mechanicals

6 AMP

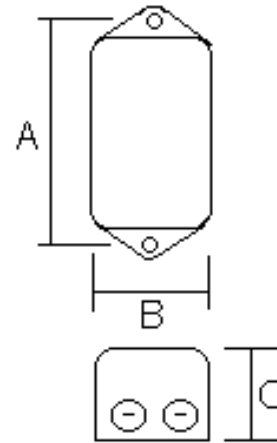
FREQ(MHz)	.15	.5	1	10	30
CM, dB	26	40	45	45	40
DM, dB	16	28	35	55	55

10 AMP

FREQ(MHz)	.15	.5	1	10	30
CM, dB	16	30	35	40	36
DM, dB	16	26	32	54	56

20 AMP

FREQ(MHz)	.15	.5	1	10	30
CM, dB	10	20	30	40	45
DM, dB	16	24	32	52	55



A	B	C	MTG HOLE
2.95	2.2	1.57	.2

Dimensions shown for reference only.
Specifications subject to change.

RADIUS POWER
Standard & Custom Products

www.radiuspower.com
PH 714-289-0055
FAX 714-289-214