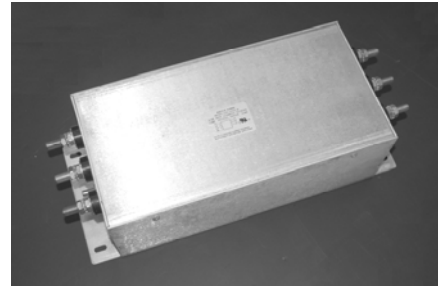


RP380 Series

600V, 3-Ph Delta Power Line Filter

**RP380
3PH DELTA TO 300A
600V**

ROHS COMPLIANT



Specifications

Operating Frequency: DC - 60Hz
Operating Voltage: 600V +10%
Ambient Temperature: 50°C
Inrush Rating: 20x (10ms), 1.5x (1min)
Climatic Category: 25/100/21
Hipot Rating: 3800VDC (P/N - E)
Terminations: 15/30/50A (M5), 80/100A (M6),
 150/200A (M10), 300A (M12)
Applications: Inverters/ Machinery/ Industrial
 Grid-tied inverters, Solar inverters

Typical Leakage Current

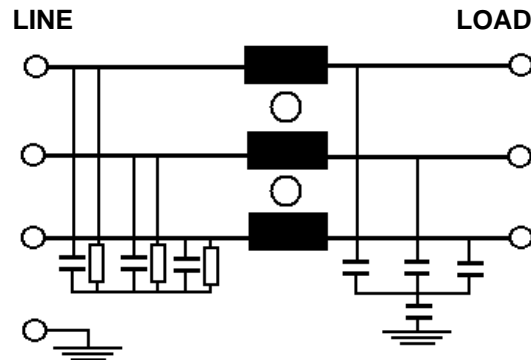
Ycap, nF	mA, 400V/50HZ
0	0
10	.18
22	.4
100	1.8
1000	18
2200	30

Part Number/Ordering

RP380	-X (Amps)	-Y (Ycap, nF)	-T
	15	0	S
	30	10	
	50	22	
	80	100	
	100	1000	
	150	2200	
	200		
	300		

Note: Use any -Y (Ycap) with any -X (Amps) rating
 e.g. RP380-100-100-S
 100 Amps with 100nF y-caps

Schematic



Dimensions shown for reference only.
 Specifications subject to change.

RADIUS POWER
 Standard & Custom Products

www.radiuspower.com
 PH 714-289-0055
 FAX 714-289-214

RP380 Typical Insertion Loss, 50/50ohm

Mechanicals

15 / 30 AMP

FREQ(MHz)	.15	.5	1	10	30
CM, dB	55	65	65	52	40
DM, dB	55	65	70	70	60

50 AMP

FREQ(MHz)	.15	.5	1	10	30
CM, dB	50	65	65	52	40
DM, dB	50	60	65	70	55

80 AMP

FREQ(MHz)	.15	.5	1	10	30
CM, dB	45	55	55	50	40
DM, dB	50	55	60	50	30

100 AMP

FREQ(MHz)	.15	.5	1	10	30
CM, dB	60	65	65	50	30
DM, dB	50	60	60	50	30

150 AMP

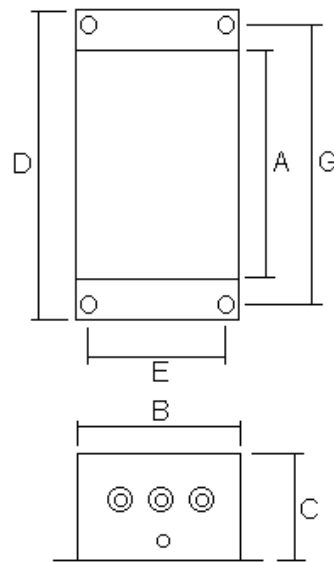
FREQ(MHz)	.15	.5	1	10	30
CM, dB	55	60	60	50	30
DM, dB	45	55	60	50	30

200 AMP

FREQ(MHz)	.15	.5	1	10	30
CM, dB	50	55	55	45	30
DM, dB	45	55	55	50	30

300 AMP

FREQ(MHz)	.15	.5	1	10	30
CM, dB	50	55	55	42	30
DM, dB	45	50	50	40	30



I	A	B	C	D	E	G	MTG
15/30/50	8	3.5	2.75	10	2.5	9	.25x.3
80	10	4	3.25	12	3	11	.25x.3
100/150 200	13	6.6	4.5	15.75	5.12	14.7	.3x.6
300	18	7	5	20	6	19	.3x.6

Dimensions shown for reference only.
Specifications subject to change.

RADIUS POWER
Standard & Custom Products

www.radiuspower.com
PH 714-289-0055
FAX 714-289-214