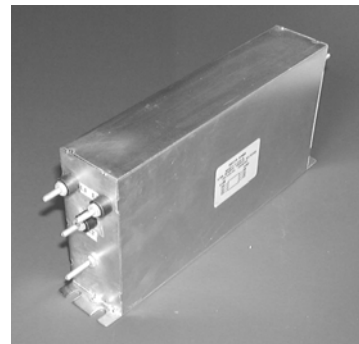


RP328 Series

3-Phase Delta 1-Stage Power Line Filter

**RP328
3PH DELTA TO 180A
BOOKSHELF DESIGN**

ROHS COMPLIANT



Specifications

Operating Frequency: DC - 60Hz
Operating Voltage: 480V +10%
Ambient Temperature: 50°C
Inrush Rating: 20x (10ms), 1.5x (1min)
Climatic Category: 25/100/21
Hipot Rating: 3500VDC (P/N - E)
Terminations: 7/16/30/42/55A (M5)
 75/100A (M6), 130/180A (M10)
Safety Approvals: cCSAus/UR/EN133200

Leakage Current

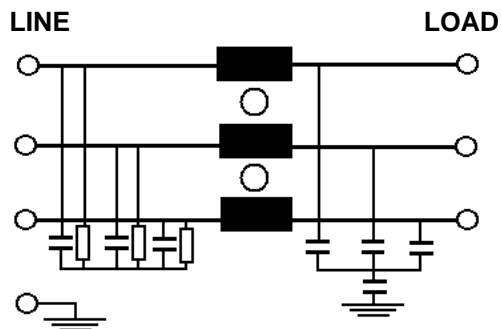
Ycap, nF	mA, 400V/50HZ
0	0
1	.018
4.7	.09
10	.18
22	.4
100	1.8
1000	18
2200	30

Part Number/Ordering

RP327	-X (Amps)	-Y (Ycap, nF)	-T
	7	0	S
	16	1	
	30	4.7	
	42	10	
	55	22	
	75	100	
	100	1000	
	130	2200	
	180		

Note: Use any -Y (Ycap) with any -X (Amps) rating
 e.g. RP328-130-1-S
 130 Amps with 1nF y-caps

Schematic



RP328 Typical Insertion Loss, 50/50ohm
Mechanicals
7 / 16 AMP

FREQ(MHz)	.15	.5	1	10	30
CM, dB	65	70	70	50	30
DM, dB	55	70	70	60	40

30 AMP

FREQ(MHz)	.15	.5	1	10	30
CM, dB	65	70	70	45	25
DM, dB	55	70	70	60	40

42 / 55 AMP

FREQ(MHz)	.15	.5	1	10	30
CM, dB	65	70	70	40	20
DM, dB	55	65	60	50	50

75 / 100 AMP

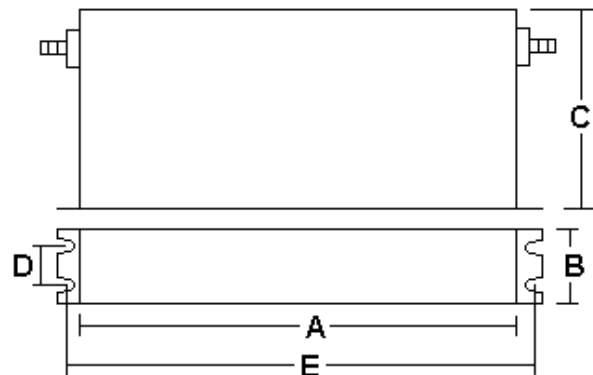
FREQ(MHz)	.15	.5	1	10	30
CM, dB	65	70	70	40	20
DM, dB	55	70	60	55	30

130 AMP

FREQ(MHz)	.15	.5	1	10	30
CM, dB	58	70	65	40	22
DM, dB	55	60	55	40	42

180 AMP

FREQ(MHz)	.15	.5	1	10	30
CM, dB	55	70	70	40	20
DM, dB	50	65	50	40	40



	A	B	C	D	E	MTG
7	6.3	1.57	2.75	0.8	7.0	.25x.3
16	8.7	1.77	2.75	1.0	9.25	.25x.3
30	9.45	2	3.35	1.2	10	.25x.3
42	11	2	3.35	1.2	11.6	.25x.3
55	8.7	3.35	3.55	2.4	9.25	.25x.3
75	9.45	3.15	5.3	2.4	10	.25x.3
100	9.45	3.55	5.9	2.56	10	.25x.3
130	9.45	3.55	5.9	2.56	10	.25x.5
180	13.8	4.7	6.7	4	14.4	.25x.5