

**RP310 Series**

**Ultra Compact 3-Phase 1-Stage Power Line Filter**

**RP310  
3PH DELTA TO 20A  
CHASSIS MOUNT FILTER**

ROHS COMPLIANT



**Specifications**

**Operating Frequency:** DC - 60Hz  
**Operating Voltage:** 480V +10%  
**Ambient Temperature:** 50°C  
**Inrush Rating:** 20x (10ms), 1.5x (1min)  
**Climatic Category:** 25/100/21  
**Hipot Rating:** 3000VDC (P/N - E)  
**Terminals (-T):** .250 QD Tabs  
**Safety Approvals:** UR/cCSAus/EN133200

**Leakage Current**

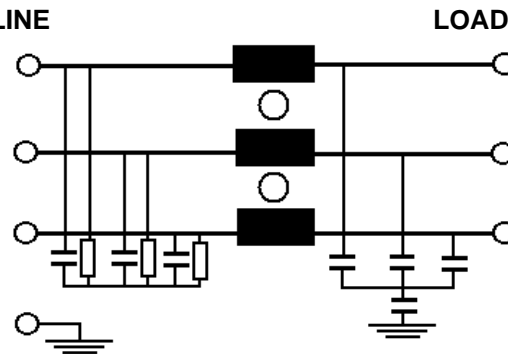
Ycap, nF	mA, 400V/50HZ
0	0
1	.018
4.7	.09
10	.18
22	.4
100	1.8

**Part Number/Ordering**

RP310	-X (Amps)	-Y (Ycap, nF)	-T
	6	0	QD
	10	1	
	20	4.7	
		10	
		22	
		100	

Note: Use any -Y (Ycap) with any -X (Amps) rating  
 e.g. RP310-20-22-QD  
 20 Amps with 22nF y-caps

**Schematic**



Dimensions shown for reference only.  
 Specifications subject to change.

**RADIUS POWER**  
 Standard & Custom Products

www.radiuspower.com  
 PH 714-289-0055  
 FAX 714-289-214

**RP310 Typical Insertion Loss, 50/50ohm**

**Mechanicals**

**6 AMP**

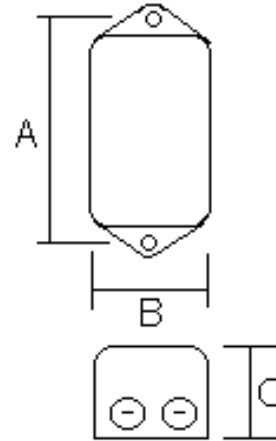
<b>FREQ(MHz)</b>	<b>.15</b>	<b>.5</b>	<b>1</b>	<b>10</b>	<b>30</b>
<b>CM, dB</b>	54	76	82	82	72
<b>DM, dB</b>	28	40	47	67	66

**10 AMP**

<b>FREQ(MHz)</b>	<b>.15</b>	<b>.5</b>	<b>1</b>	<b>10</b>	<b>30</b>
<b>CM, dB</b>	34	62	67	72	69
<b>DM, dB</b>	32	38	44	66	62

**20 AMP**

<b>FREQ(MHz)</b>	<b>.15</b>	<b>.5</b>	<b>1</b>	<b>10</b>	<b>30</b>
<b>CM, dB</b>	22	40	62	72	76
<b>DM, dB</b>	28	36	44	62	65



A	B	C	MTG HOLE
2.95	2.2	1.57	.2