

**RP300 High Current**

**3-Phase Delta 1-Stage Power Line Filter**

**RP300  
3PH DELTA 600A & 800A  
INVERTER APPLICATIONS**

ROHS COMPLIANT

**Specifications**

**Operating Frequency:** DC - 60Hz  
**Operating Voltage:** 480V +10%  
**Ambient Temperature:** 60°C  
**Inrush Rating:** 20x (10ms), 1.5x (1min)  
**Climatic Category:** 25/100/21  
**Hipot Rating:** 3500VDC (P/N - E)  
**Terminations:** Dual M12 or 1/2 Studs  
**Applications:** Inverters / Machinery / Industrial  
 Grid-tied Inverters, Solar Inverters

**Part Number / Ordering**

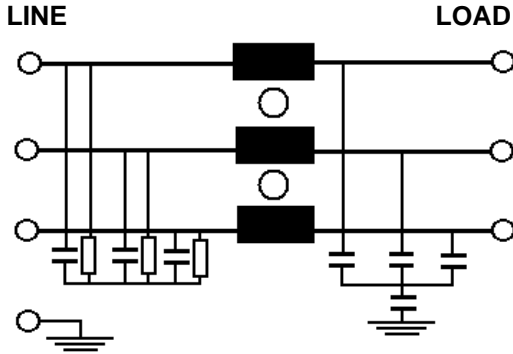
| RP300 | -X<br>(Amps) | -Y<br>(Ycap, nF) | -T |
|-------|--------------|------------------|----|
|       | 600          | 10               | S  |
|       | 800          | 22               |    |
|       |              | 100              |    |
|       |              | 470              |    |
|       |              | 1000             |    |
|       |              | 2200             |    |

Note: Use any -Y (Ycap) with any -X (Amps) rating  
 e.g. RP300-600-100-S  
 600 Amps with 100nF y-cap

**Leakage Current**

| Ycap, nF | mA, 400V/50HZ |
|----------|---------------|
| 10       | .18           |
| 22       | .4            |
| 100      | 1.8           |
| 470      | 9             |
| 1000     | 18            |
| 2200     | 30            |

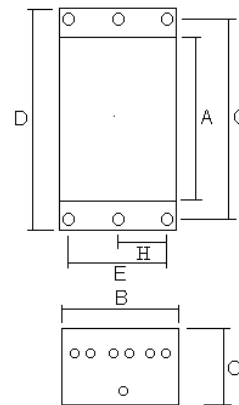
**Schematic**



**Typical Insertion Loss. 50/50 ohm**

| FREQ(MHz) | .15 | .5 | 1  | 10 | 30 |
|-----------|-----|----|----|----|----|
| CM, dB    | 60  | 50 | 50 | 45 | 40 |
| DM, dB    | 50  | 45 | 45 | 40 | 30 |

**Mechanicals**



| I   | A  | B   | C   | D  | E | G  | H | MTG   |
|-----|----|-----|-----|----|---|----|---|-------|
| 600 | 15 | 9.6 | 4.5 | 17 | 8 | 16 | 4 | .3x.6 |
| 800 | 15 | 9.6 | 6.5 | 17 | 8 | 16 | 4 | .3x.6 |

Dimensions shown for reference only.  
 Specifications subject to change.

**RADIUS POWER**  
 Standard & Custom Products

www.radiuspower.com  
 PH 714-289-0055  
 FAX 714-289-214