

**RP230 Series**

**Hi-Perf Dual Stage Power Line Filter**

**RP230  
DUAL STAGE TO 40A  
CHASSIS MOUNT FILTER**

ROHS COMPLIANT



**Specifications**

**Operating Freq.:** DC - 60Hz  
**Operating Voltage:** 250V +10%  
**Ambient Temperature:** 40°C  
**Inrush Rating:** 20x (10ms), 1.5x (1.5min)  
**Climatic Category :** 25/100/21  
**Hipot Rating:** 2500VDC (P/N - E)  
**Terminals:** .250 QD Tabs  
                   M4 (30/40A)  
**Safety Approvals:** cCSAus/UR/EN133200

**Leakage Current**

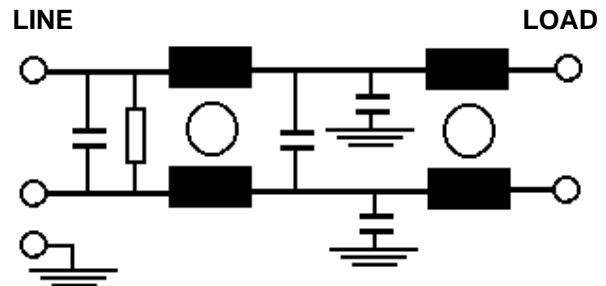
Ycap, nF	mA, 120V/60HZ	mA, 250V/50HZ
0	0	0
.22	.02	.035
.47	.042	.074
1	.09	.15
2.2	.2	.35
3.3	.3	.52
4.7	.42	.74
10	.9	1.5

**Part Number / Ordering**

RP230	-X (Amps)	-Y (Ycap, nF)	-T
	3.5	0	QD
	6.5	.22	S
	20	.47	
	30	1	
	40	2.2	
		3.3	
		4.7	
		10	

Note: Use any -Y (Ycap) with any -X (Amps) rating  
 e.g. RP230-40-4.7-S  
 40 Amps with 4.7nF y-caps

**Schematic**



Dimensions shown for reference only.  
 Specifications subject to change.

**RADIUS POWER**  
 Standard & Custom Products

www.radiuspower.com  
 PH 714-289-0055  
 FAX 714-289-214

**RP230 Typical Insertion Loss, 50/50ohm**

**Mechanicals**

**3.5 AMP**

<b>FREQ(MHz)</b>	<b>.15</b>	<b>.5</b>	<b>1</b>	<b>10</b>	<b>30</b>
<b>CM, dB</b>	60	62	62	52	45
<b>DM, dB</b>	40	60	68	60	60

**6.5 AMP**

<b>FREQ(MHz)</b>	<b>.15</b>	<b>.5</b>	<b>1</b>	<b>10</b>	<b>30</b>
<b>CM, dB</b>	60	62	62	50	40
<b>DM, dB</b>	40	60	68	60	60

**20 AMP**

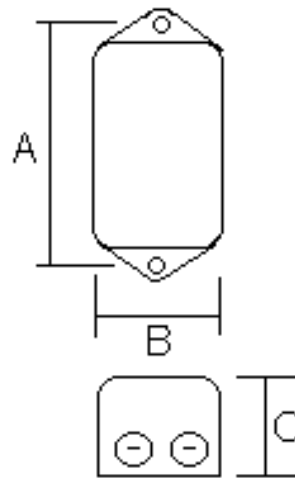
<b>FREQ(MHz)</b>	<b>.15</b>	<b>.5</b>	<b>1</b>	<b>10</b>	<b>30</b>
<b>CM, dB</b>	24	46	50	60	60
<b>DM, dB</b>	25	40	60	65	65

**30 AMP**

<b>FREQ(MHz)</b>	<b>.15</b>	<b>.5</b>	<b>1</b>	<b>10</b>	<b>30</b>
<b>CM, dB</b>	42	50	55	65	60
<b>DM, dB</b>	60	60	65	65	65

**40 AMP**

<b>FREQ(MHz)</b>	<b>.15</b>	<b>.5</b>	<b>1</b>	<b>10</b>	<b>30</b>
<b>CM, dB</b>	28	44	55	60	60
<b>DM, dB</b>	50	52	65	65	65



	A	B	C	MTG HOLE
3.5/6.5/20	2.95	2	1.57	.2
30/40	5.63	2.2	2.1	.2

Dimensions shown for reference only.  
Specifications subject to change.

**RADIUS POWER**  
Standard & Custom Products

www.radiuspower.com  
PH 714-289-0055  
FAX 714-289-214