

RP225 Series

Hi-Perf Dual Stage Power Line Filter

**RP225
DUAL STAGE TO 20A
CHASSIS MOUNT FILTER**

ROHS COMPLIANT



Specifications

Operating Freq.: DC - 60Hz
Operating Voltage: 250V +10%
Ambient Temperature: 40°C
Inrush Rating: 20x (10ms), 1.5x (1.5min)
Climatic Category : 25/100/21
Hipot Rating: 2500VDC (P/N - E)
Terminals: .250 QD
Safety Approvals: cCSAus/UR/EN133200

Leakage Current

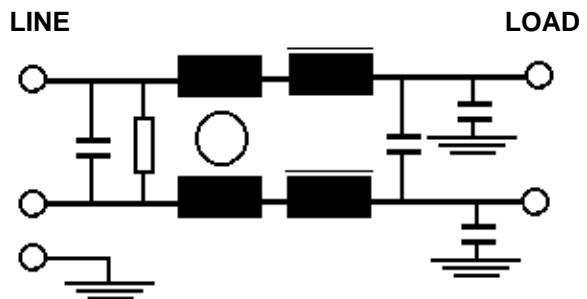
Ycap, nF	mA, 120V/60HZ	mA, 250V/50HZ
0	0	0
.22	.02	.035
.47	.042	.074
1	.09	.15
2.2	.2	.35
3.3	.3	.52
4.7	.42	.74
10	.9	1.5
22	2	3.5
100	9	15

Part Number / Ordering

RP225	-X (Amps)	-Y (Ycap, nF)	-T
	3	0	QD
	4	.22	
	6	.47	
	10	1	
	12	2.2	
	20	3.3	
		4.7	
		10	
		22	
		100	

Note: Use any -Y (Ycap) with any -X (Amps) rating
 e.g. RP225-20-22-QD
 20 Amps with 22nF y-caps

Schematic



Dimensions shown for reference only.
 Specifications subject to change.

RADIUS POWER
 Standard & Custom Products

www.radiuspower.com
 PH 714-289-0055
 FAX 714-289-214

3 AMP

FREQ(MHz)	.15	.5	1	10	30
CM, dB	14	28	30	65	65
DM, dB	26	65	65	55	36

4 AMP

FREQ(MHz)	.15	.5	1	10	30
CM, dB	48	50	50	45	45
DM, dB	65	75	75	65	60

6 AMP

FREQ(MHz)	.15	.5	1	10	30
CM, dB	19	32	36	65	50
DM, dB	30	65	65	55	40

10 AMP

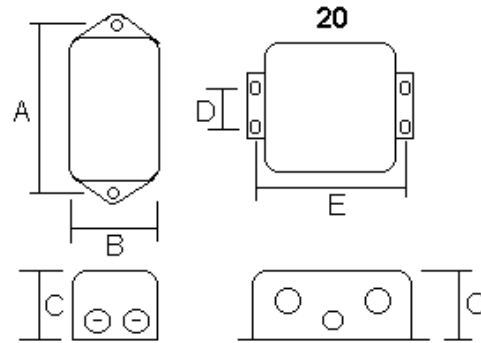
FREQ(MHz)	.15	.5	1	10	30
CM, dB	20	30	34	65	50
DM, dB	26	65	65	52	45

12 AMP

FREQ(MHz)	.15	.5	1	10	30
CM, dB	22	35	40	65	50
DM, dB	33	65	65	55	40

20 AMP

FREQ(MHz)	.15	.5	1	10	30
CM, dB	20	32	35	65	50
DM, dB	26	65	65	50	45



	A	B	C	D	E	MTG
3,6,10	2.94	2.0	1.57	---	---	.2
4	2.4	1.8	1.14	---	---	.2
12	4.05	2.2	1.8	---	---	.2
20	---	---	1.50	2.0	3.75	.3x.18