

**RP220 Series**

**Hi-Perf Dual Stage Power Line Filter**

**RP220  
DUAL STAGE TO 20A  
CHASSIS MOUNT FILTER**

ROHS COMPLIANT



**Specifications**

**Operating Freq.:** DC - 60Hz  
**Operating Voltage:** 250V +10%  
**Ambient Temperature:** 40°C  
**Inrush Rating:** 20x (10ms), 1.5x (1.5min)  
**Climatic Category :** 25/100/21  
**Hipot Rating:** 2500VDC (P/N - E)  
**Terminals:** .250 QD Tabs  
**Safety Approvals:** UR/cUR/EN133200

**Leakage Current**

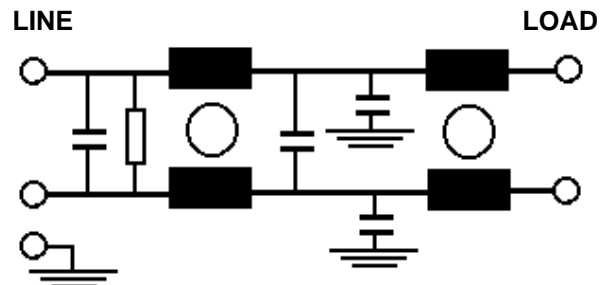
Ycap, nF	mA, 120V/60HZ	mA, 250V/50HZ
0	0	0
.22	.02	.035
.47	.042	.074
1	.09	.15
2.2	.2	.35
3.3	.3	.52
4.7	.42	.74
10	.9	1.5

**Part Number / Ordering**

RP220	-X (Amps)	-Y (Ycap, nF)
	6	0
	10	.22
	12	.47
	16	1
	20	2.2
		3.3
		4.7
		10

Note: Use any -Y (Ycap) with any -X (Amps) rating  
 e.g. RP220-10-10  
 10 Amps with 10nF y-caps

**Schematic**



Dimensions shown for reference only.  
 Specifications subject to change.

**RADIUS POWER**  
 Standard & Custom Products

www.radiuspower.com  
 PH 714-289-0055  
 FAX 714-289-214

**RP220 Typical Insertion Loss, 50/50ohm**

**Mechanicals**

**6 AMP**

<b>FREQ(MHz)</b>		<b>.15</b>	<b>.5</b>	<b>1</b>	<b>10</b>	<b>30</b>
<b>CM, dB</b>		60	70	70	52	50
<b>DM, dB</b>		50	60	68	60	60

**10 AMP**

<b>FREQ(MHz)</b>		<b>.15</b>	<b>.5</b>	<b>1</b>	<b>10</b>	<b>30</b>
<b>CM, dB</b>		55	70	70	50	50
<b>DM, dB</b>		45	60	60	70	65

**12 AMP**

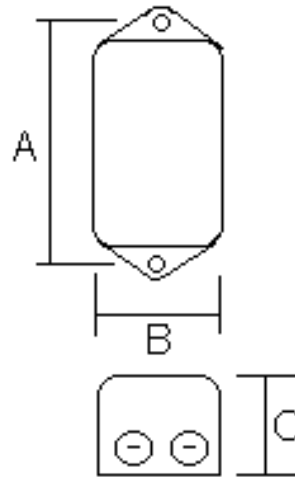
<b>FREQ(MHz)</b>		<b>.15</b>	<b>.5</b>	<b>1</b>	<b>10</b>	<b>30</b>
<b>CM, dB</b>		56	70	70	50	50
<b>DM, dB</b>		45	60	68	60	60

**16 AMP**

<b>FREQ(MHz)</b>		<b>.15</b>	<b>.5</b>	<b>1</b>	<b>10</b>	<b>30</b>
<b>CM, dB</b>		42	65	70	55	50
<b>DM, dB</b>		36	60	65	65	60

**20 AMP**

<b>FREQ(MHz)</b>		<b>.15</b>	<b>.5</b>	<b>1</b>	<b>10</b>	<b>30</b>
<b>CM, dB</b>		40	65	70	52	40
<b>DM, dB</b>		34	58	60	65	60



A	B	C	MTG HOLE
4.06	2.2	1.8	.2

Dimensions shown for reference only.  
Specifications subject to change.

**RADIUS POWER**  
Standard & Custom Products

www.radiuspower.com  
PH 714-289-0055  
FAX 714-289-214