

RP210 Series

Compact Dual Stage Power Line Filter

**RP210
DUAL STAGE TO 16A
CHASSIS MOUNT FILTER**

ROHS COMPLIANT



Specifications

Operating Freq.: DC - 60Hz
 Operating Voltage: 250V +10%
 Ambient Temperature: 40°C
 Inrush Rating: 20x (10ms), 1.5x (1.5min)
 Climatic Category : 25/100/21
 Hipot Rating: 2500VDC (P/N - E)
 Terminals: .250 QD Tabs
 Safety Approvals: UR/cUR/EN133200

Leakage Current

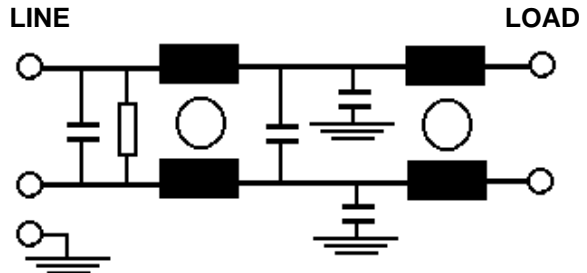
Ycap, nF	mA, 120V/60HZ	mA, 250V/50HZ
0	0	0
.22	.02	.035
.47	.042	.074
1	.09	.15
2.2	.2	.35
3.3	.3	.52
4.7	.42	.74
10	.9	1.5

Part Number / Ordering

RP210	-X (Amps)	-Y (Ycap, nF)
	3	0
	6	.22
	10	.47
	16	1
		2.2
		3.3
		4.7
		10

Note: Use any -Y (Ycap) with any -X (Amps) rating

Schematic



RP210 Typical Insertion Loss, 50/50ohm

Mechanicals

3 AMP

FREQ(MHz)	.15	.5	1	10	30
CM, dB	55	60	70	60	35
DM, dB	30	70	56	56	60

6 AMP

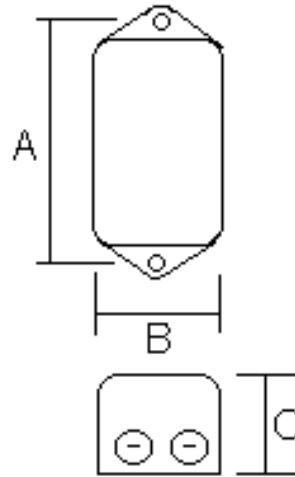
FREQ(MHz)	.15	.5	1	10	30
CM, dB	48	56	60	55	40
DM, dB	16	50	60	55	60

10 AMP

FREQ(MHz)	.15	.5	1	10	30
CM, dB	48	55	62	55	40
DM, dB	16	50	65	65	68

16 AMP

FREQ(MHz)	.15	.5	1	10	30
CM, dB	16	40	50	70	55
DM, dB	22	50	52	70	70



	A	B	C	MTG HOLE
3,6	2.4	1.8	1.14	.2
10	2.95	2	1.2	.2
16	2.95	2	1.57	.2

Dimensions shown for reference only.
Specifications subject to change.

RADIUS POWER
Standard & Custom Products

www.radiuspower.com
PH 714-289-0055
FAX 714-289-214