

RP187 Series

Hi-Perf IEC Inlet Dual Stage Power Line Filter

**RP187
DUAL STAGE TO 20A
IEC INLET**

ROHS COMPLIANT



Specifications

Operating Freq.: DC - 60Hz
Operating Voltage: 250V +10%
Ambient Temperature: 40°C
Inrush Rating: 20x (10ms), 1.5x (1.5min)
Climatic Category : 25/100/21
Hipot Rating: 2200VDC (P/N - E)
Terminals: .250 QD Tabs
Safety Approvals: cCSAus/UR/EN133200

Leakage Current

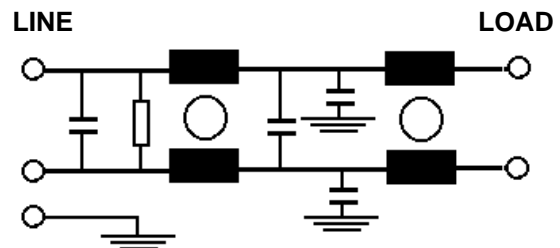
Ycap	mA, 120V/60HZ	mA, 250V,50HZ
0	0	0
.22	.02	.035
.47	.042	.074
1	.09	.15
2.2	.2	.35
3.3	.3	.52
4.7	.42	.74

Part Number / Ordering

RP187	-X (Amps)	-Y (Ycap, nF)	-T
	1	0	QD
	3	.22	
	6	.47	
	10	1	
	20	2.2	
		3.3	
		4.7	

Note: Use any -Y (Ycap) with any -X (Amps) rating
 e.g. RP187-1-2.2-QD
 1 Amp with 2.2nF y-caps

Schematic



Dimensions shown for reference only.
 Specifications subject to change.

RADIUS POWER
 Standard & Custom Products

www.radiuspower.com
 PH 714-289-0055
 FAX 714-289-214

RP187 Typical Insertion Loss, 50/50ohm

Mechanicals

1 AMP

FREQ(MHz)	.15	.5	1	10	30
CM, dB	52	60	65	65	50
DM, dB	28	45	65	65	55

3 AMP

FREQ(MHz)	.15	.5	1	10	30
CM, dB	45	60	65	65	50
DM, dB	28	45	65	65	60

6 AMP

FREQ(MHz)	.15	.5	1	10	30
CM, dB	30	50	60	60	60
DM, dB	26	40	60	60	55

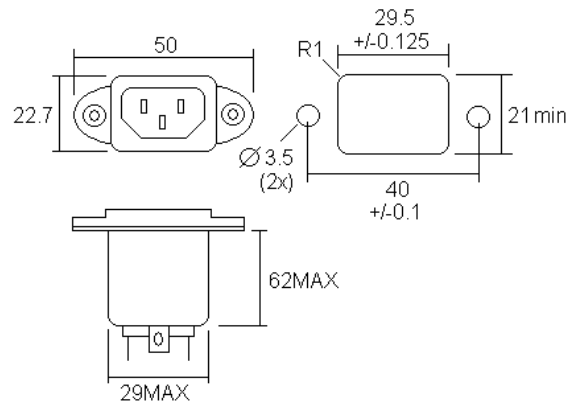
10 AMP

FREQ(MHz)	.15	.5	1	10	30
CM, dB	28	40	50	55	55
DM, dB	26	38	55	60	60

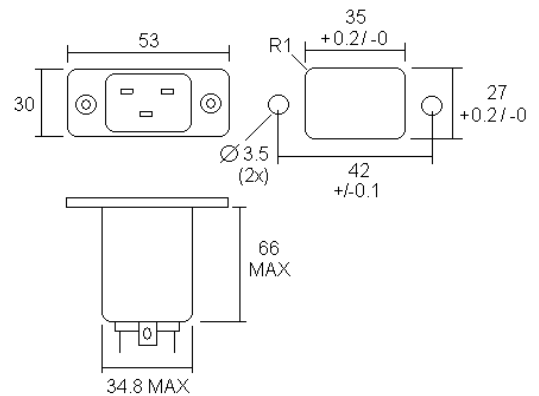
20 AMP

FREQ(MHz)	.15	.5	1	10	30
CM, dB	18	35	45	50	58
DM, dB	16	35	55	55	70

RP187 (1-10A)



RP187 (20A)



Dimensions shown for reference only.
Specifications subject to change.

RADIUS POWER
Standard & Custom Products

www.radiuspower.com
PH 714-289-0055
FAX 714-289-214