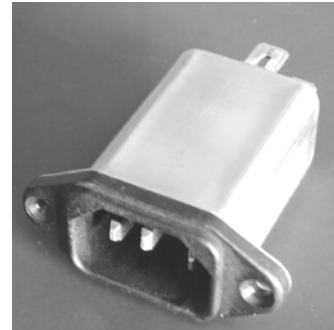


**RP185 Series**

**Hi-Perf IEC Inlet 1-Stage Power Line Filter**

**RP185  
IEC INLET TO 15A**

ROHS COMPLIANT



**Specifications**

**Operating Freq.:** DC - 60Hz  
**Operating Voltage:** 250V +10%  
**Ambient Temperature:** 40°C  
**Inrush Rating:** 20x (10ms), 1.5x (1.5min)  
**Climatic Category :** 25/100/21  
**Hipot Rating:** 2200VDC (P/N - E)  
**Terminals:** .250 Quick Disconnect Tabs  
**Safety Approvals:** cCSAus/UR/EN133200

**Leakage Current**

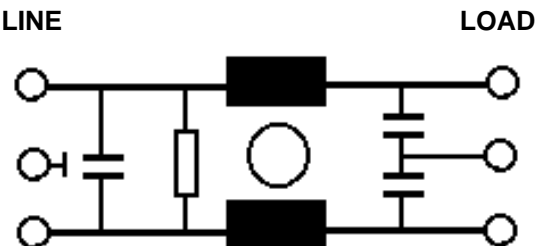
Ycap	mA, 120V/60HZ	mA, 250V,50HZ
0	0	0
.22	.02	.035
.47	.042	.074
1	.09	.15
2.2	.2	.35
3.3	.3	.52
4.7	.42	.74

**Part Number / Ordering**

RP185	-X (Amps)	-Y (Ycap, nF)	-T
	1	0	QD
	3	.22	
	6	.47	
	10	1	
	15	2.2	
		3.3	
		4.7	

Note: Use any -Y (Ycap) with any -X (Amps) rating  
 e.g. RP185-15-.22-QD  
 15 Amps with .22nF y-caps

**Schematic**



Dimensions shown for reference only.  
 Specifications subject to change.

**RADIUS POWER**  
 Standard & Custom Products

www.radiuspower.com  
 PH 714-289-0055  
 FAX 714-289-214

**RP185 Typical Insertion Loss, 50/50ohm**

**Mechanicals**

**1 AMP**

<b>FREQ(MHz)</b>	<b>.15</b>	<b>.5</b>	<b>1</b>	<b>10</b>	<b>30</b>
<b>CM, dB</b>	46	55	55	55	50
<b>DM, dB</b>	22	38	60	60	50

**3 AMP**

<b>FREQ(MHz)</b>	<b>.15</b>	<b>.5</b>	<b>1</b>	<b>10</b>	<b>30</b>
<b>CM, dB</b>	36	50	55	55	50
<b>DM, dB</b>	22	35	50	60	60

**6 AMP**

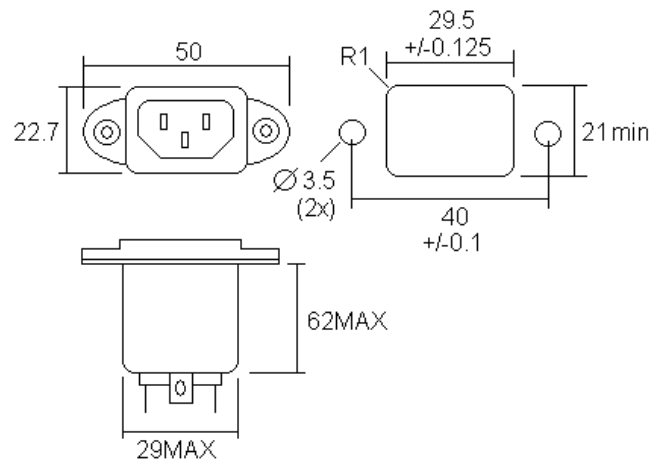
<b>FREQ(MHz)</b>	<b>.15</b>	<b>.5</b>	<b>1</b>	<b>10</b>	<b>30</b>
<b>CM, dB</b>	22	35	42	55	60
<b>DM, dB</b>	20	32	40	50	55

**10 AMP**

<b>FREQ(MHz)</b>	<b>.15</b>	<b>.5</b>	<b>1</b>	<b>10</b>	<b>30</b>
<b>CM, dB</b>	20	32	38	55	55
<b>DM, dB</b>	20	32	40	58	60

**15 AMP**

<b>FREQ(MHz)</b>	<b>.15</b>	<b>.5</b>	<b>1</b>	<b>10</b>	<b>30</b>
<b>CM, dB</b>	14	22	30	50	58
<b>DM, dB</b>	15	32	40	54	70



Dimensions shown for reference only.  
Specifications subject to change.

**RADIUS POWER**  
Standard & Custom Products

www.radiuspower.com  
PH 714-289-0055  
FAX 714-289-214