

RP183SN Series

Snap-In PEM Single Stage Power Line Filter

**RP183SN
Snap-In PEM TO 10A
IEC & SWITCH**

ROHS COMPLIANT



Specifications

Operating Freq.: 50/60Hz
 Operating Voltage: 250V +10%
 Ambient Temperature: 40°C
 Inrush Rating: 20x (10ms), 1.5x (1.5min)
 Climatic Category : 25/100/21
 Hipot Rating: 2200VDC (P/N - E)
 Terminals: .187 Quick Disconnect Tabs
 Safety Approvals: UR/cCSAus/EN133200

Leakage Current

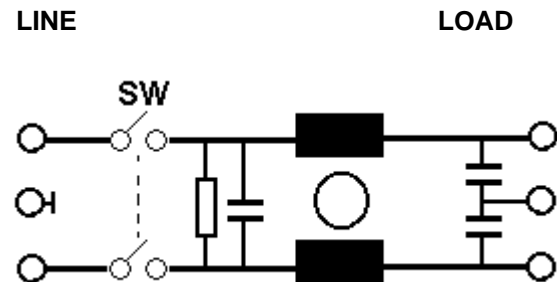
Ycap	mA, 120V/60HZ	mA, 250V,50HZ
0	0	0
.22	.02	.035
.47	.042	.074
1	.09	.15
2.2	.2	.35
3.3	.3	.52
4.7	.42	.74
10	.9	1.5

Part Number / Ordering

RP183SN	-X (Amps)	-Y (Ycap, nF)
	1	0
	3	.22
	6	.47
	10	1
		2.2
		3.3
		4.7
		10

Note: Use any -Y (Ycap) with any -X (Amps) rating
 e.g. RP183SN-3-4.7
 3 Amps with 4.7nF y-caps

Schematic



Dimensions shown for reference only.
 Specifications subject to change.

RADIUS POWER
 Standard & Custom Products

www.radiuspower.com
 PH 714-289-0055
 FAX 714-289-214

RP183SN Typical Insertion Loss, 50/50ohm

6 AMP Mechanicals

1 AMP

FREQ(MHz)	.15	.5	1	10	30
CM, dB	30	48	55	50	50
DM, dB	8	15	30	68	44

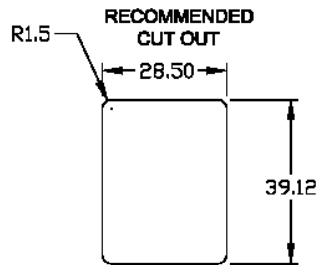
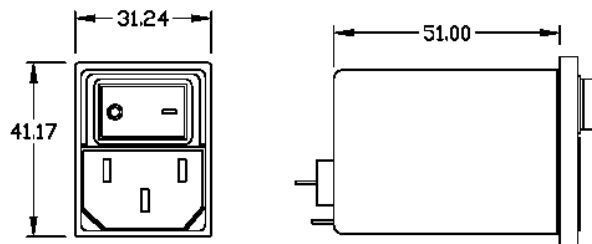
3 AMP

FREQ(MHz)	.15	.5	1	10	30
CM, dB	20	34	38	50	50
DM, dB	10	15	25	68	70

FREQ(MHz)	.15	.5	1	10	30
CM, dB	12	24	28	44	50
DM, dB	10	16	28	50	60

10 AMP

FREQ(MHz)	.15	.5	1	10	30
CM, dB	10	16	20	35	45
DM, dB	12	16	25	48	62



PANEL THICKNESS
.8 - 2.5 MM

Dimensions shown for reference only.
Specifications subject to change.

RADIUS POWER
Standard & Custom Products

www.radiuspower.com
PH 714-289-0055
FAX 714-289-214