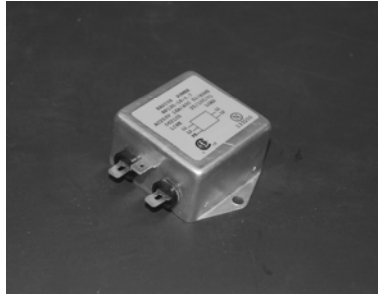


RP135 Series High Performance 1-Stage Power Line Filter

**RP135
HIGH PERFORMANCE TO 150A
CHASSIS MOUNT FILTER**

ROHS COMPLIANT



Specifications

Operating Freq.: DC - 60Hz
Operating Voltage: 250V +10%
Ambient Temperature: 40°C
Inrush Rating: 20x (10ms), 1.5x (1.5min)
Climatic Category : 25/100/21
Hipot Rating: 2500VDC (P/N - E)
Terminals: .250 QD Tabs (1-20A)
 M4 (30A), M6 (60-100A), M10 (150A)
Safety Approvals: cCSAus/UR/EN133200

Leakage Current

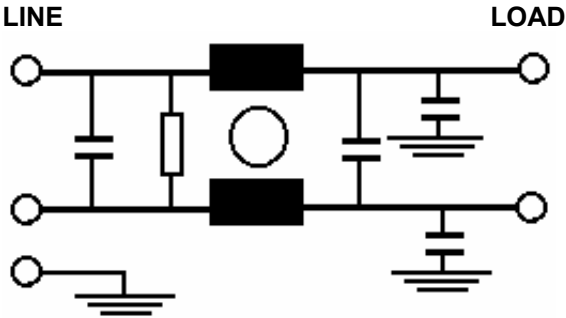
Ycap, nF	mA, 120V/60HZ	mA, 250V/50HZ
0	0	0
.22	.02	.035
.47	.042	.074
1	.09	.15
2.2	.2	.35
3.3	.3	.52
4.7	.42	.74
10	.9	1.5
22	2	3.5
100	9	15

Part Number / Ordering

RP135	-X (Amps)	-Y (Ycap, nF)	-T
	1	0	QD
	3	.22	S
	6	.47	
	10	1	
	16	2.2	
	20	3.3	
	30	4.7	
	60	10	
	100	22	
	150	100	

Note: Use any -Y (Ycap) with any -X (Amps) rating
 e.g. RP135-100-4.7-S
 100 Amps with 4.7nF y-caps

Schematic



Catalog 01-06 Dimensions are shown for Reference purposes only. Specifications are subject to change.

RADIUS POWER
 Standard & Custom Products
 941E North Elm Street
 Orange, CA 92867

www.radiuspower.com
 PH 714-289-0055
 FAX 714-289-2149

RP135 Typical Insertion Loss, 50/50ohm

Mechanicals

1 AMP

FREQ(MHz)	.15	.5	1	10	30
CM, dB	40	50	50	45	40
DM, dB	15	26	45	50	50

3 AMP

FREQ(MHz)	.15	.5	1	10	30
CM, dB	30	42	50	55	35
DM, dB	18	30	40	55	50

6 AMP

FREQ(MHz)	.15	.5	1	10	30
CM, dB	20	30	36	55	40
DM, dB	15	26	32	55	40

10/16 AMP

FREQ(MHz)	.15	.5	1	10	30
CM, dB	18	25	40	55	45
DM, dB	15	25	40	65	50

20 AMP

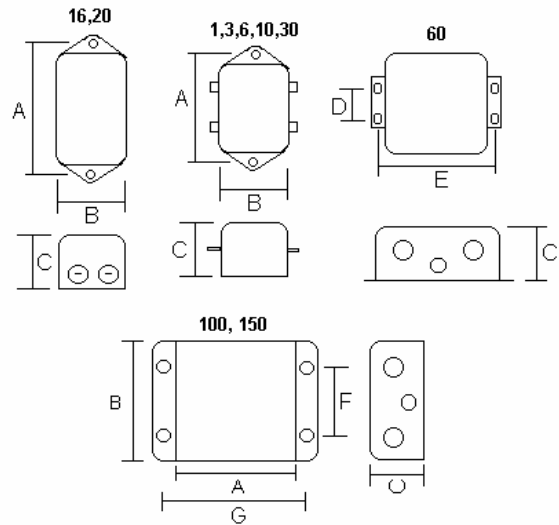
FREQ(MHz)	.15	.5	1	10	30
CM, dB	24	38	45	50	50
DM, dB	42	60	65	60	50

30/60 AMP

FREQ(MHz)	.15	.5	1	10	30
CM, dB	20	30	40	45	50
DM, dB	38	70	70	55	60

100/150 AMP

FREQ(MHz)	.15	.5	1	10	30
CM, dB	20	30	40	45	50
DM, dB	40	60	65	70	65



	A	B	C	D	E	F	G	MTG
1,3,6,10	2.12	.95	.67	--	---	--	---	.2
16	2.4	1.8	1.14	--	---	--	---	.2
20	2.95	2.2	1.57	--	---	--	---	.2
30	2.4	2	1.14	--	---	--	---	.2
60	---	---	2.25	2	3.75	--	---	.3x.18
100,150	6.75	4.25	2.75	--	---	2	7.38	.3x.18